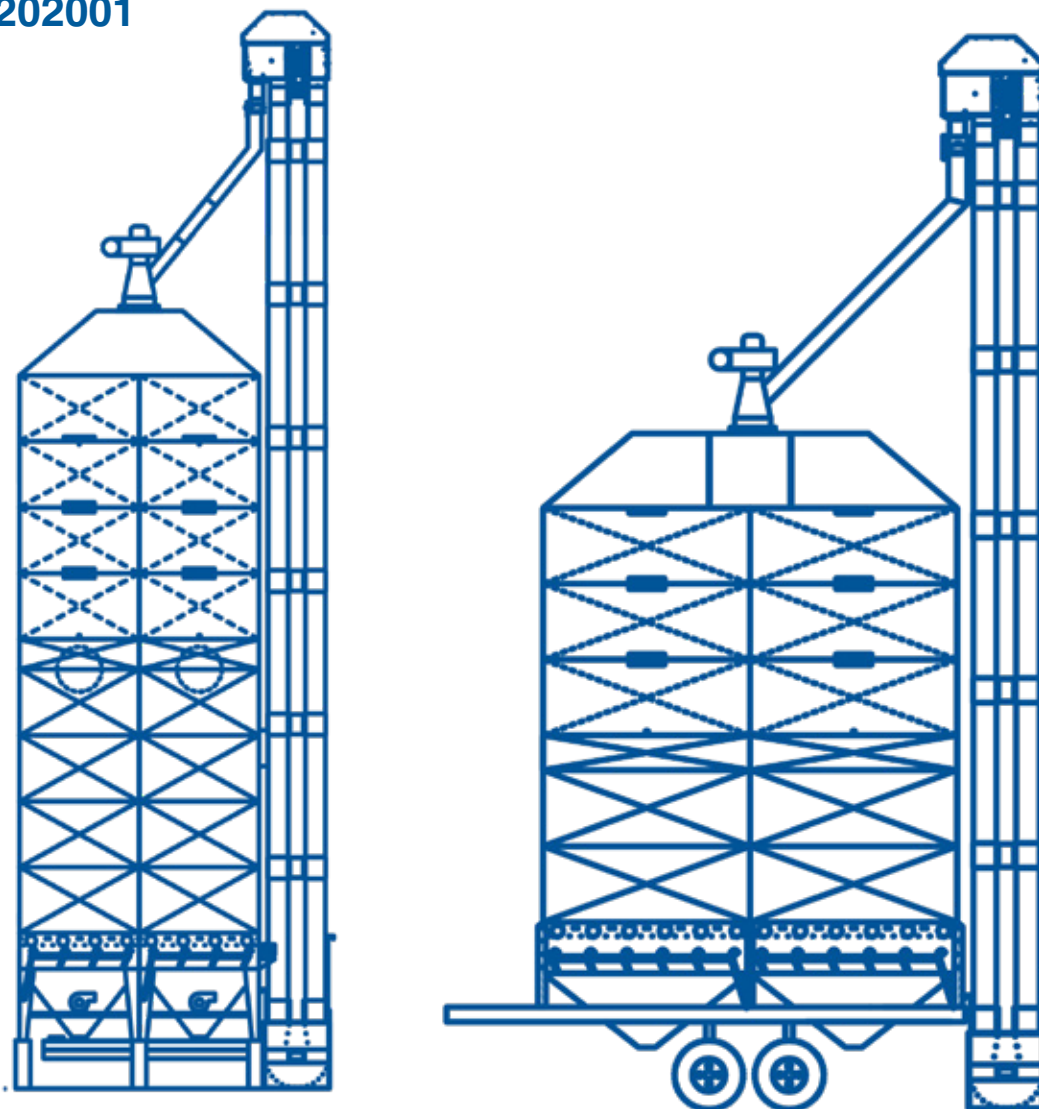


A10-1015-EN-202001



FARMI DRYER COLUMN

ASSEMBLY MANUAL (ADD-ON TO MANUAL A10-1001)

ARSKAMETALLI OY
www.arskametalli.fi



CONTENTS

Introduction.....	3
1. Overview.....	4
1.1. Dimensions: Farmi.....	4
1.1.1. Model P.....	4
1.1.2. Model M.....	4
1.2. MW mobile dryer.....	5
2. Installation.....	6
2.1. Base.....	6
2.2. Heat cells.....	7
2.2.1. Levelling cells.....	8
2.2.2. Air channels.....	8
2.3. Storage containers.....	10
2.3.1. Draw bars.....	10
2.3.2. Cross support.....	11

INTRODUCTION

This manual is an add-on to assembly manual of Arska grain dryers A10-1001. This manual describes the assembly instructions of the Farmi model (also used with MW mobile dryers).

Read this entire manual before installing the product. See the operating instructions and the necessary safety instructions. Successful installation and pre-trained use ensure functional operations.

Keep this manual available for frequent reference and review it with new personnel.

If you need any additional information or assistance, please contact your distributor or us (www.arskametalli.fi).

1. OVERVIEW

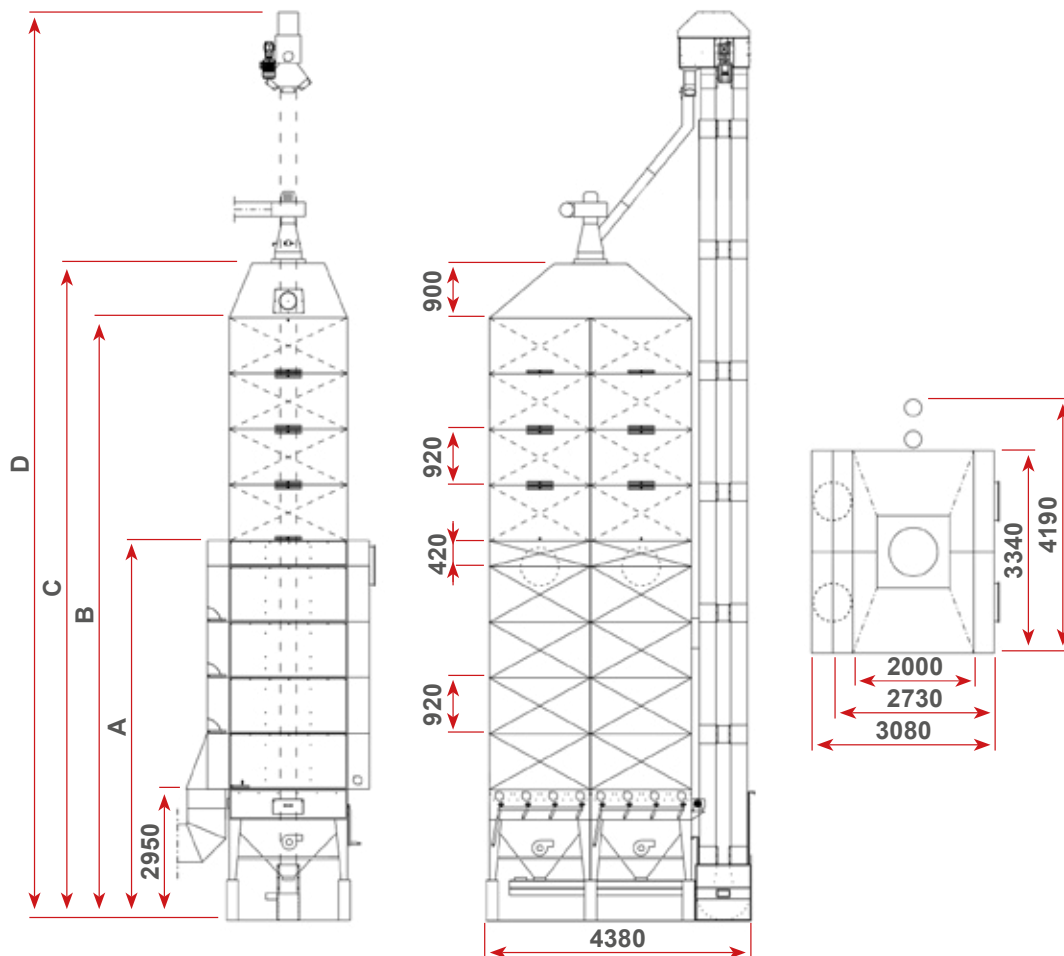
1.2. Dimensions: Farmi

1.2.1. Model P

Elevator A92/A118	A [mm]	B [mm]	C [mm]	D [mm]
P 27,8 m ³ (2,5 + 2)	4 380	6 220	7 120	11 000
P 34,0 m ³ (2,5 + 3)	4 380	7 140	8 040	12 000
P 38,8 m ³ (3,5 + 3)	5 300	8 060	8 960	13 000
P 45,0 m ³ (3,5 + 4)	5 300	8 980	9 880	14 000
P 49,8 m ³ (4,5 + 4)	6 220	9 900	10 800	15 000
P 56,0 m ³ (4,5 + 5)	6 220	10 820	11 720	16 000
P 60,8 m ³ (5,5 + 5)	7 140	11 740	12 640	17 000

1.2.1. Model M

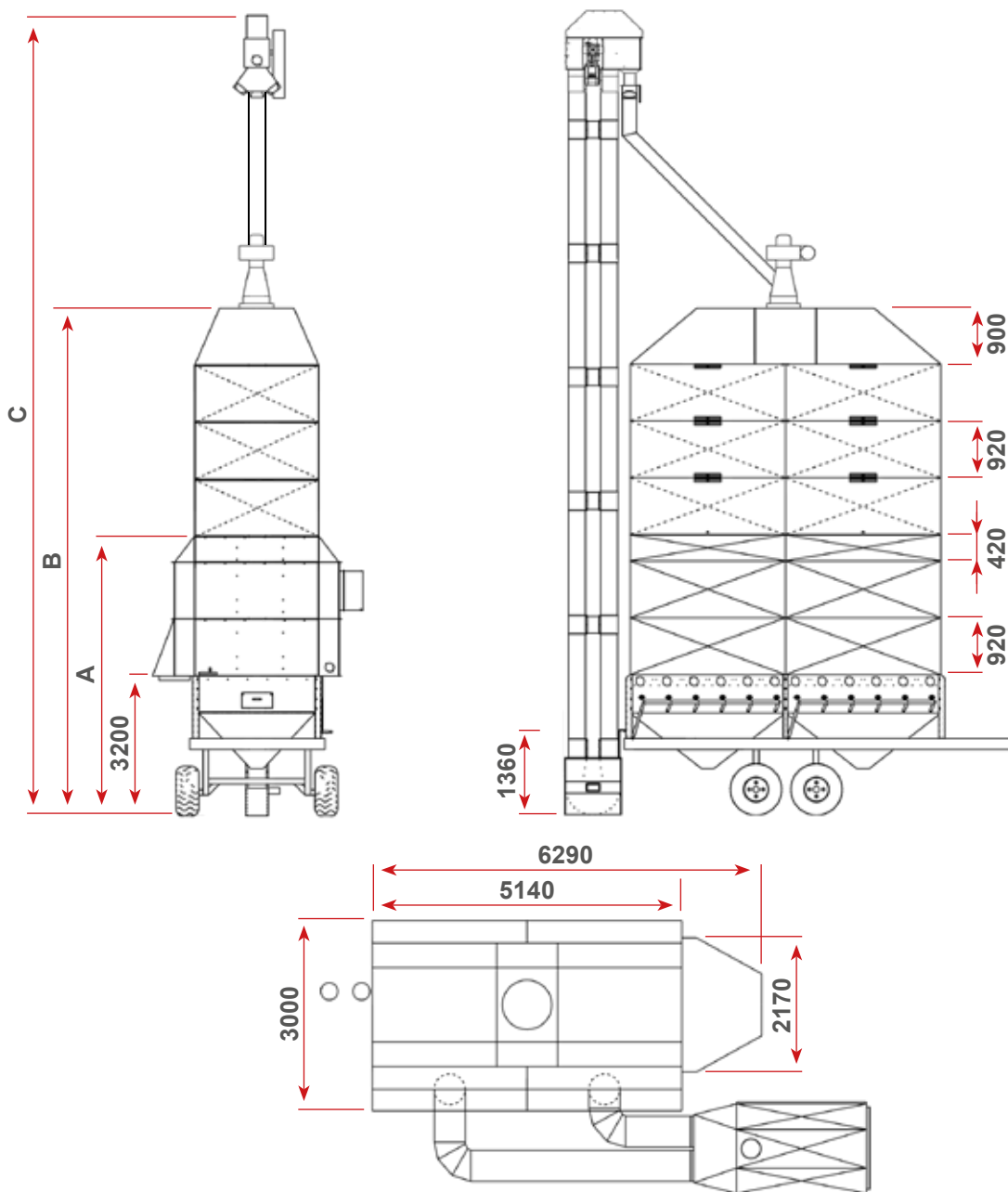
Elevator A92/A118	A [mm]	B [mm]	C [mm]	D [mm]
M 53,2 m ³ (2,5 + 3)	5 210	7 970	8 870	14 050
M 60,2 m ³ (3,5 + 3)	6 130	8 890	9 790	15 050
M 69,5 m ³ (3,5 + 4)	6 130	9 810	10 710	15 550
M 76,8 m ³ (4,5 + 4)	7 050	10 730	11 630	16 550
M 86,0 m ³ (4,5 + 5)	7 050	11 650	12 550	17 550
M 93,0 m ³ (5,5 + 5)	7 970	12 570	13 470	18 550



1.3. Dimensions: MW mobile dryer

Elevator A92/A118	A [mm]	B [mm]	C [mm]
F-M 53,2 m ³ (2,5 + 3)	5 460	9 125	14 050
F-M 60,4 m ³ (3,5 + 3)	6 380	10 045	15 050
F-M 69,6 m ³ (3,5 + 4)	6 380	10 965	16 050
F-M 76,8 m ³ (4,5 + 4)	7 300	11 885	17 050
F-M 86,0 m ³ (4,5 + 5)	7 300	12 805	18 050
F-M 93,0 m ³ (5,5 + 5)	8 220	13 725	18 550

With JEMA T45 conveyor | Distance of the elevator and centerline of the machinery 220mm



2. INSTALLATION

2.1. Base

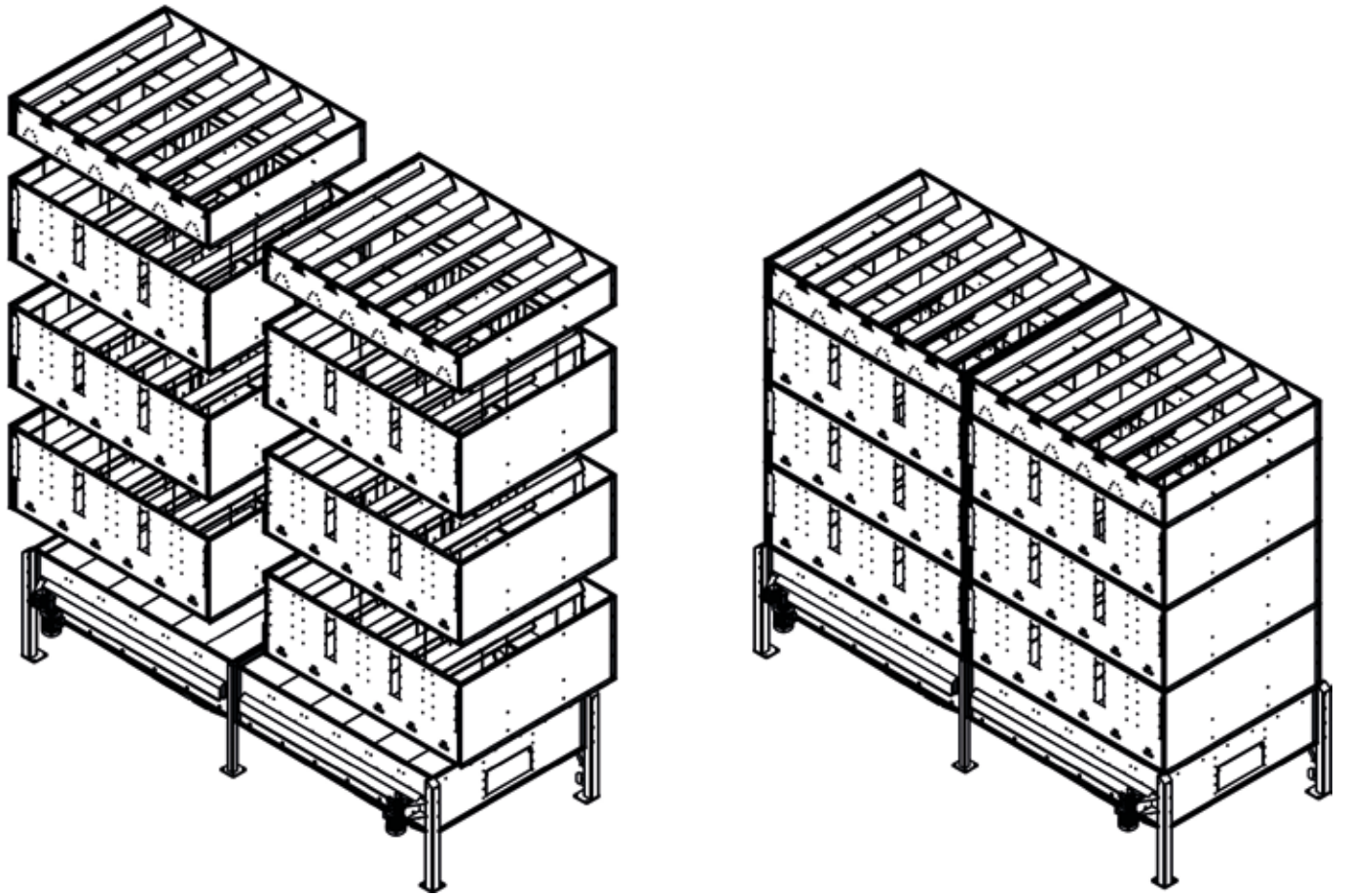
Mount dryer base on sturdy platform. Make sure that it's possible to connect elevator and bottom conveyor (height difference).

ⓘ NOTE!

See feeder and bottom fan installation instructions from grain dryer assembly manual (A10-1001).

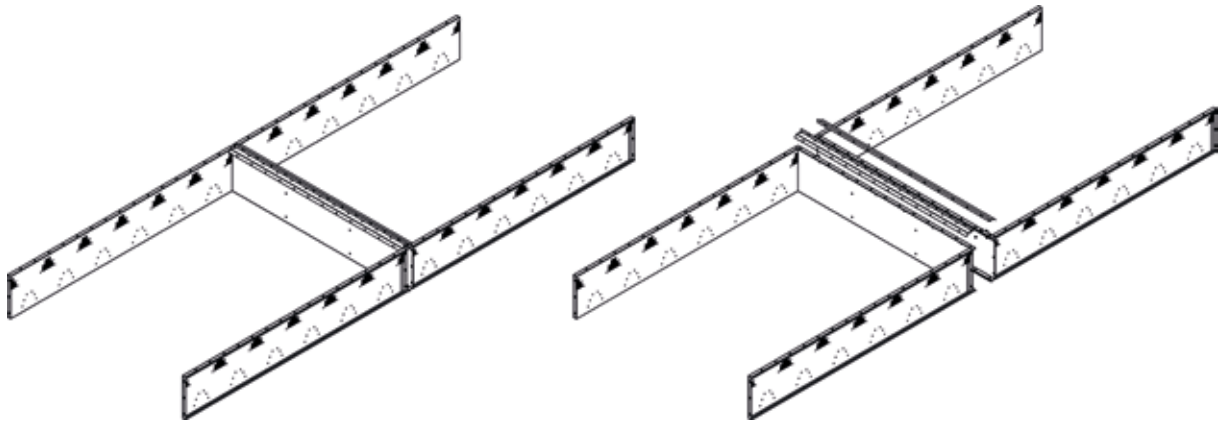
2.2. Heat cells

Install the cells in place. Attach the cells to base and other cells from three sides. Center sides are left without fastening screws. Screws are attached to the cells for attaching the air end parts. Install the cells such a way that the screws are placed in the middle of the dryer.



2.2.1. Levelling cells

Strengthen center seam from levelling cell's upper edge using plates 11136. Attach the plates 11136 to levelling cells upper edge before installing them to place (M8x16 + screw). Attach plates to each other (M8x16 + screw). Bonding point is covered with plate 11143.

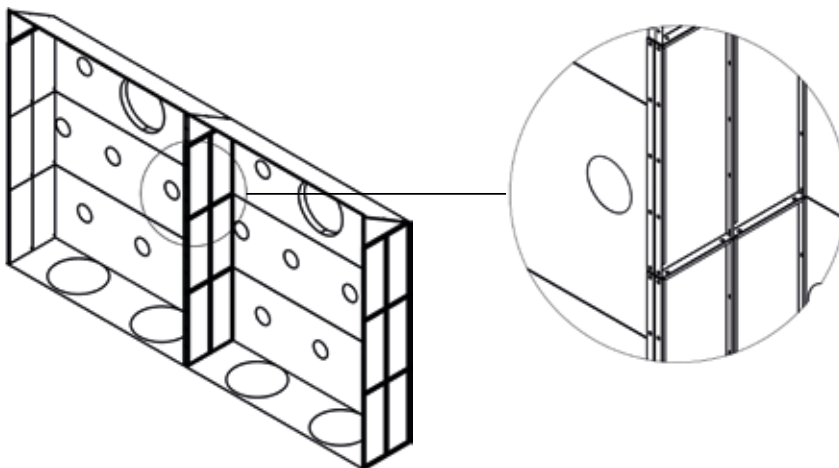


2.2.2. Air channels

Attach the widening and bottom top plates to lower cells before lifting the cells to place. After that you can install the widening plates. Install the end plates. Remember the assembly direction and order of the cells!

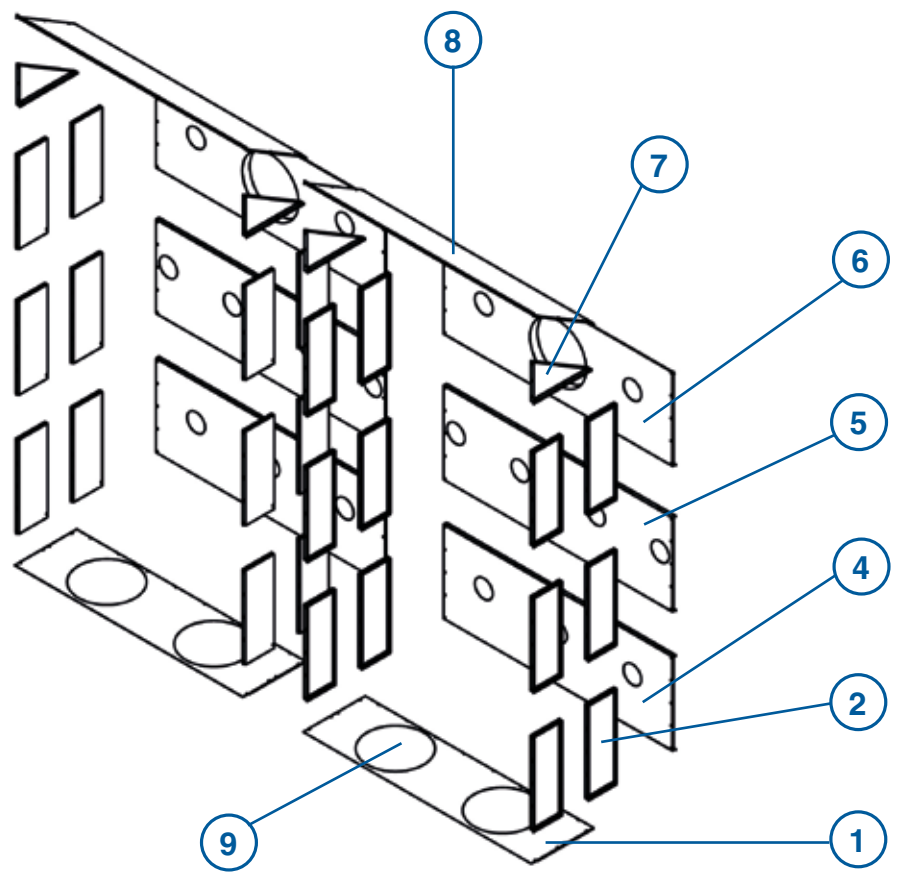
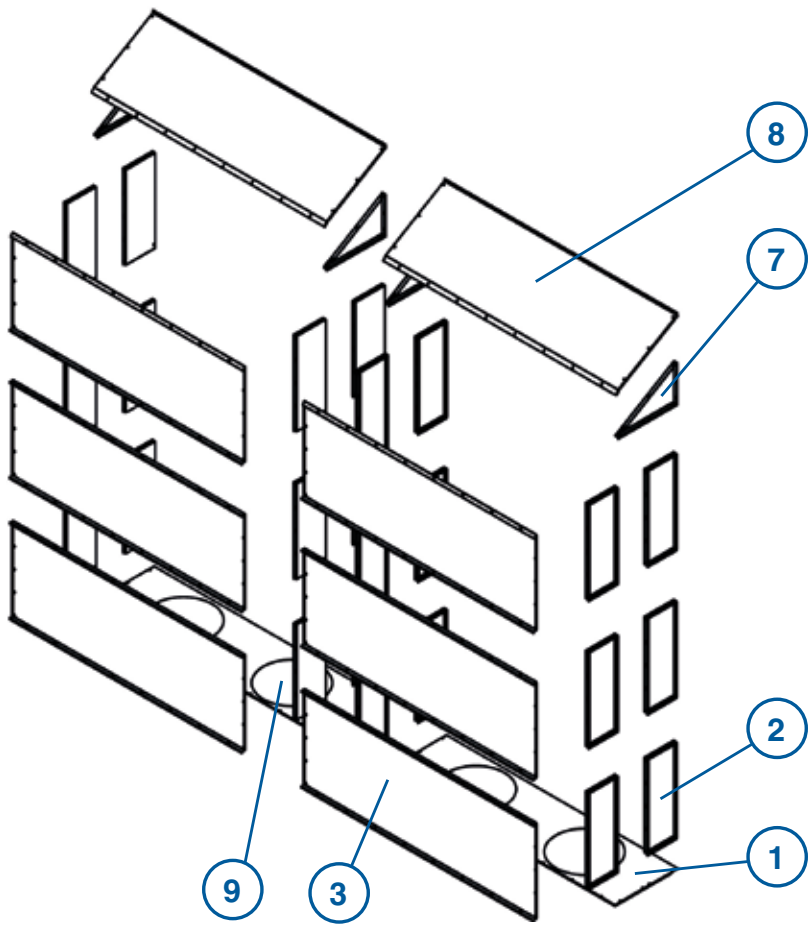
Install the top plates. Attach the top plates to levelling cell upper fin with drill screws 200mm intervals.

Install the middle plates against each other so that it's possible to attach the end plates.



Air channel parts

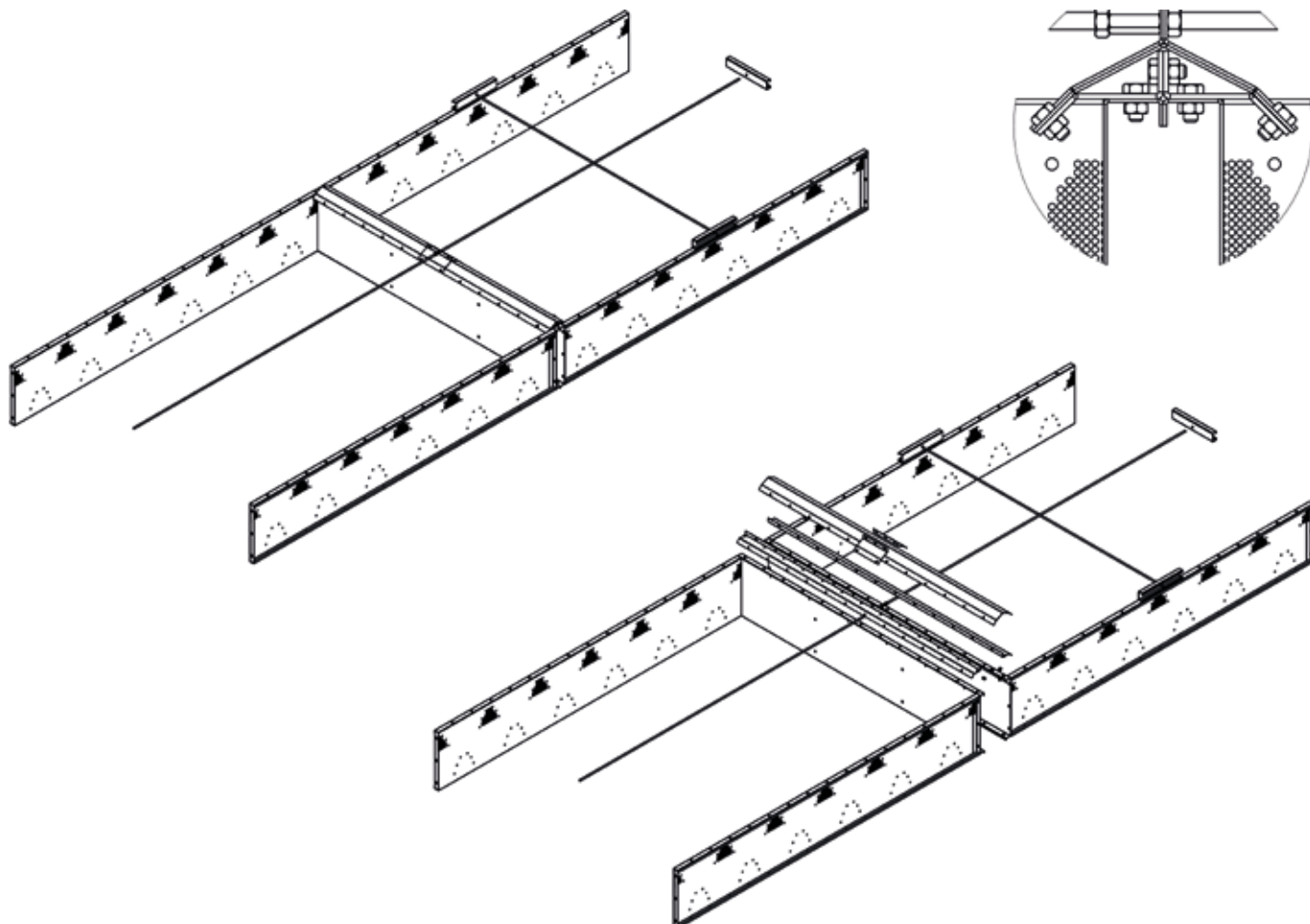
PART	DESCRIPTION
1	Bottom plate 2 x Ø630
2	Widening plate
3	End plate (inlet)
4	End plate 3 x Ø200 (outlet)
5	End plate 4 x Ø200 (outlet)
6	End plate 2 x Ø200, 1 x Ø630 (outlet)
7	Widening plate, top plate (double)
8	Top plate (double)
9	Closing hatch + bind Ø650 (manhole)



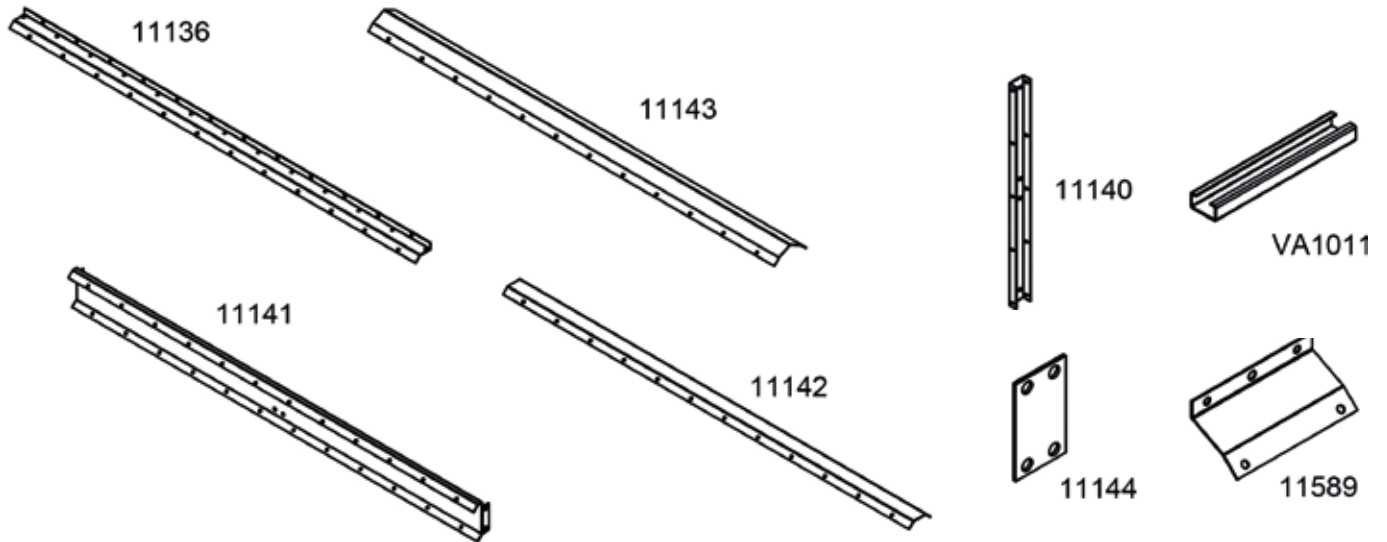
2.3. Storage container

2.3.1. Draw bars

Install the draw bars (M10 threaded rod) to lowest storage container's bottom part. Attach parts 11589 in the middle of the plate 11143. Install the long draw bars (L=2500). Attach the bars to middle using a extension nut. Remember to install support bar reinforcements to outside.



2.3.2. Cross support

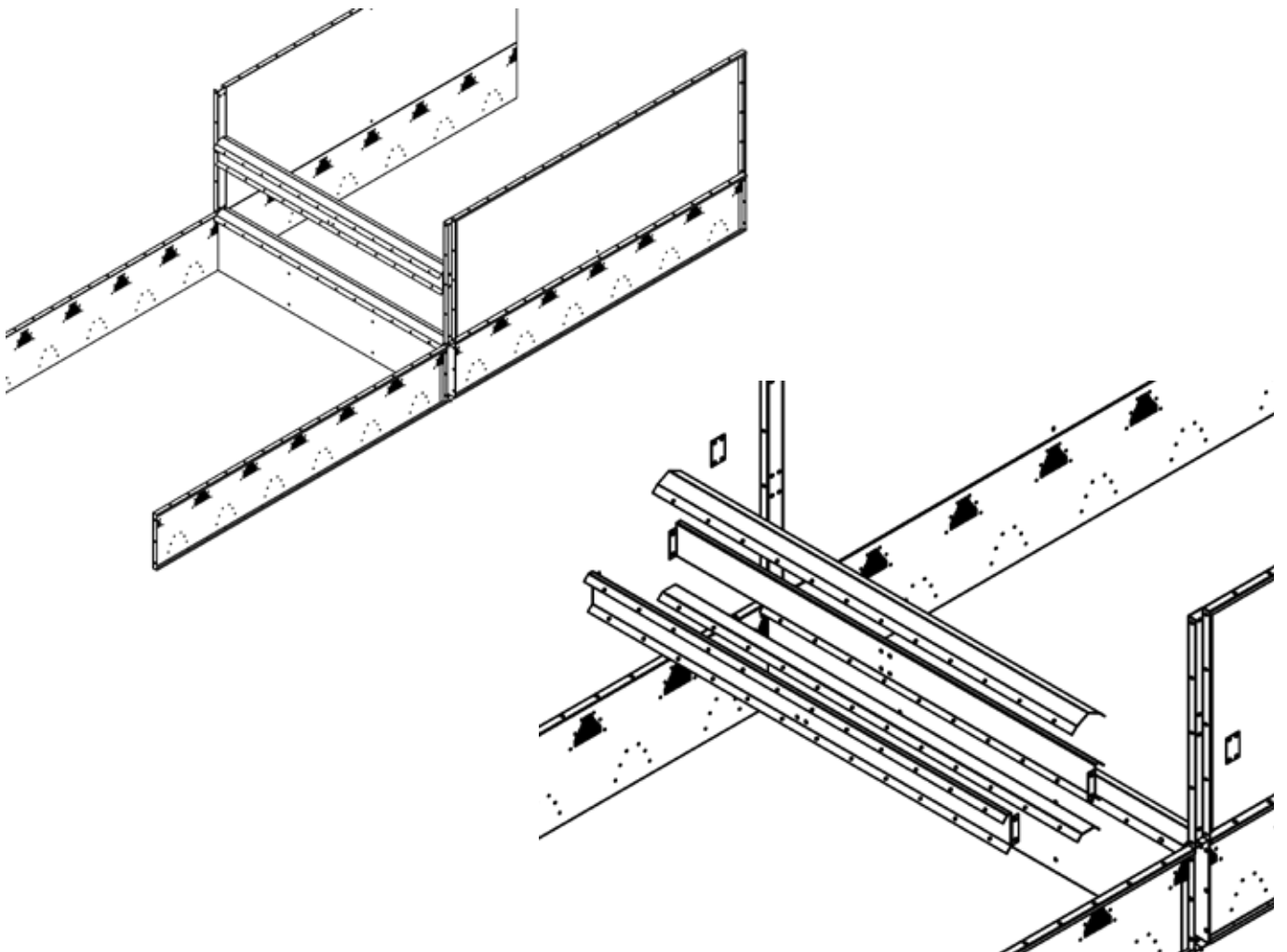


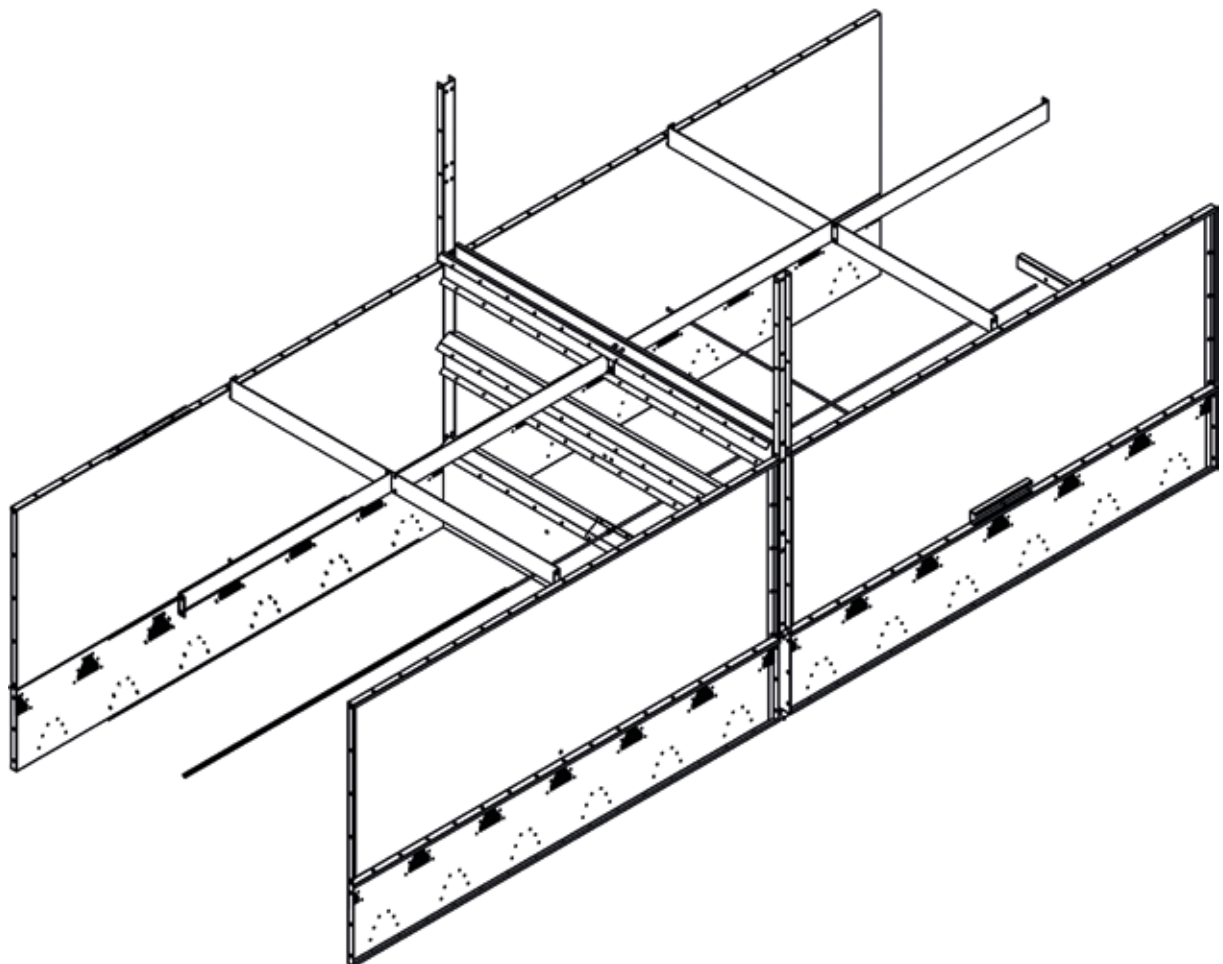
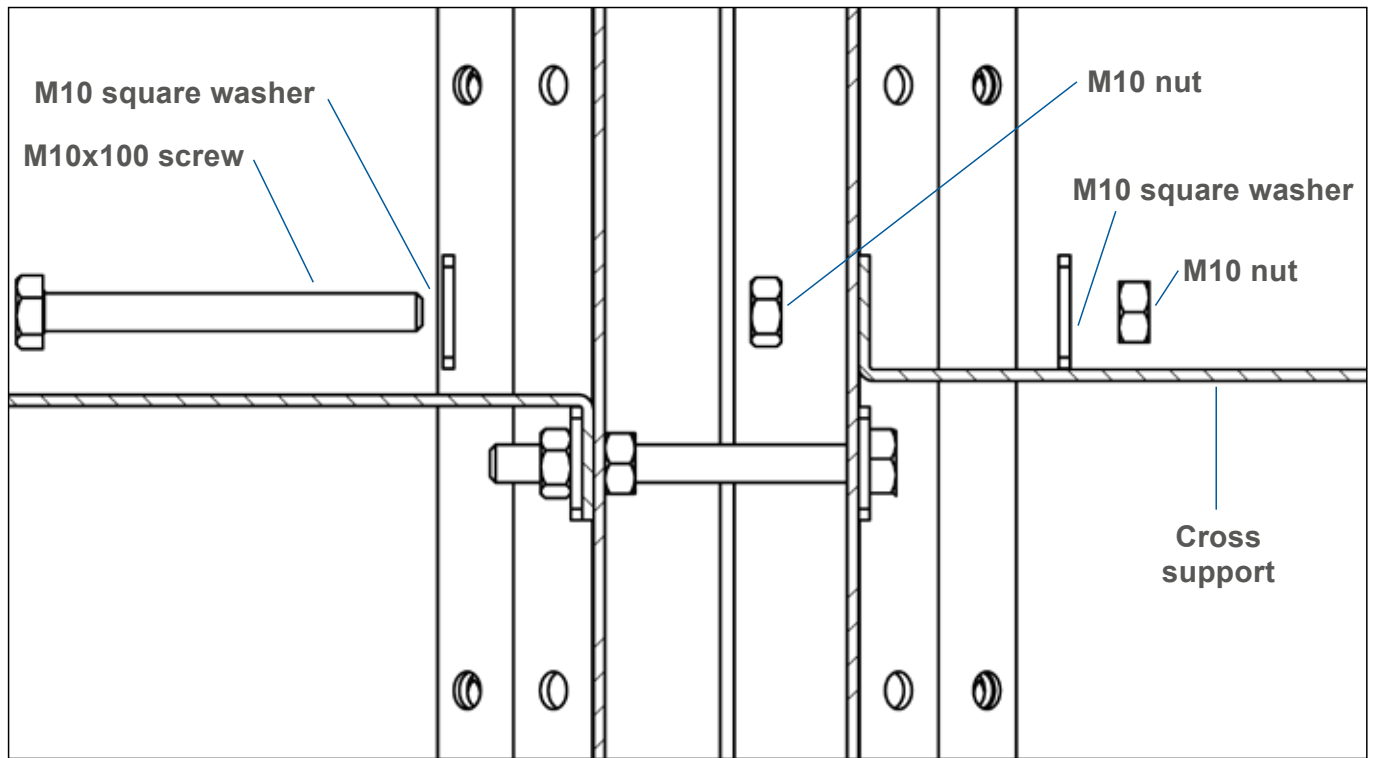
PART	STORAGE CONTAINER LAYERS					
	2	3	4	5	6	7
11136	2	2	2	2	2	2
11140	4	6	8	10	12	14
11141	6	10	14	18	22	26
11142	3	5	7	9	11	13
11143	4	6	8	10	12	14
11144	2	4	6	8	10	12
Screw M8x16	150	250	350	440	540	640
Nut M8	150	250	350	440	540	640
Screw M10x20	16	32	48	64	90	110
Screw M10x100	4	8	12	16	20	24
Nut M10	20	40	60	80	110	130
Square washer M10	8	16	24	32	40	48

Assemble the storage containers without middle side plates. Install vertical bars 11140 between end plates. Attach horizontal bars to vertical bars, which consists of parts 11141 (2pcs), 11142 and 11143. Remember to install part 11144 outside the vertical bar.

Storage container support bars are installed to container's horizontal seams and they're attached to horizontal bars with M10x100 screws + nuts. Remember square washers and support bar reinforcements! Empty holes are plugged with screw + nut.

Attach parts 11142 and 11143 after attaching the support bars.







Arskametalli Oy
Saarentantie 33
FI-31400 Somero

www.arskametalli.fi