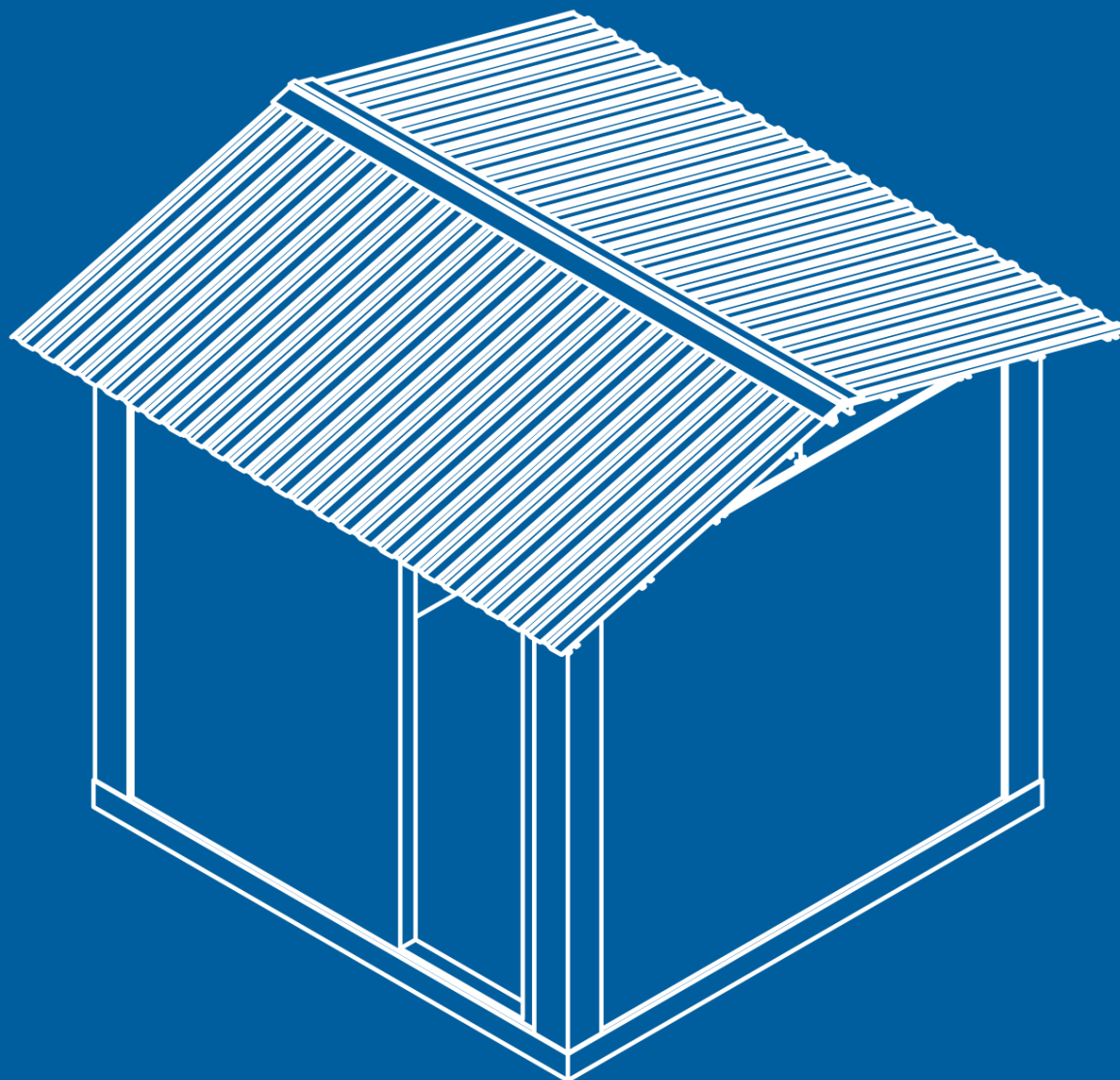


A20-1017-EN-201910



HEATER ROOM

ASSEMBLY INSTRUCTIONS

ARSKAMETALLI OY
www.arskametalli.fi



DELIVERY INFORMATION

Inspection of goods

Check that the number of packages matches the packing list and that the package and the items are intact. Mark any damages and missing materials on the packing list and report to the transport company and Arskametalli. Do not install any faulty or incorrect materials.

Warranty

Arskametalli grants a 1-year factory warranty for heater room from the date of delivery.

The warranty requires that owner of the product makes a announcement and a warranty application immediately after broke directly to manufacturer. If the faulted part and the warranty application haven't been delivered to warranty check to the manufacturer within two weeks of breaking, it won't be dealt as a warranty issue. The manufacturer is not responsible of additional warranty given by distributor.

The warranty requires that during the assembly there has been followed valid orders and manufacturer's instructions. Warranty covers production and material faults. Warranty does not cover faults caused by wrong assembly, improper using or neglecting the maintenance.

Technical information: TPE Spirit Panel

	THICKNESS [mm]	WEIGHT [kg / hm²]	FIRE CLASS	U-VALUE (W / m²)	WIDTH [mm]	LENGTH [mm]
100RW	100	~20	EI120	0,38	1200	910 - 12 000
120RW	120	~22	EI120	0,31	1200	910 - 12 000
150RW	150	~25	EI120	0,26	1200	910 - 12 000
175RW	175	~28	EI120	0,22	1200	910 - 12 000
200RW	200	~31	EI120	0,20	1200	910 - 12 000
240RW	240	~35	EI240	0,16	1200	910 - 12 000
300RW	300	~41	EI240	0,13	1200	910 - 12 000

Element manufacturer: TPE Spirit Oy, Tehdastie 17, FI-31400 Somero

More information and manuals from the manufacturer.

EU DECLARATION OF CONFORMITY



Manufacturer:

Arskametalli Oy
Saarentaantie 33
FI-31400 Somero, Finland

Product: Arska heater room

We hereby declare that the product complies with the directives:

- 2006/42/EC Machinery Directive
- 2006/95/EC Low Voltage Directive
- 2004/108/EC Electromagnetic Compatibility Directive (EMC)

Harmonized standards that have been used:

- SFS-EN 349 + A1
- SFS-EN ISO 12100
- SFS-EN ISO 13857
- SFS-EN 60204-1:2018

Somero 1.10.2019

A handwritten signature in black ink, appearing to read 'Janne Käkönen', is written over a horizontal line.

Janne Käkönen, CEO
Arskametalli Oy

SAFETY

The product must be installed by a person who is suitably qualified. During assembly work follow valid safety orders.

Use the product only for its intended purpose. Do not modify the product in any way. Unauthorised modifications may impair the functionality and safety and affect the product's service life. Any modification of the product voids the warranty.

Assembly done wrong can lead to personal injuries or cause damage to the product. Incorrectly installed product may not work right and the capacity may drop. Read this manual carefully well before starting the assembly, maintaining or using.

General information

- Always use appropriate tools, classified lifting equipment and cranes at work.
- Keep first aid kit available at all times.
- Make sure that the working area is clean, dry and well lit.
- Make sure that the person responsible of using the product has acquainted to its functions and safety orders.
- Packaging must be disposed properly.

Personal safety

Always wear protective equipment when assembling or using the product.

Signal words

NOTE!

The note text contains information that makes the installing easier.

CAUTION!

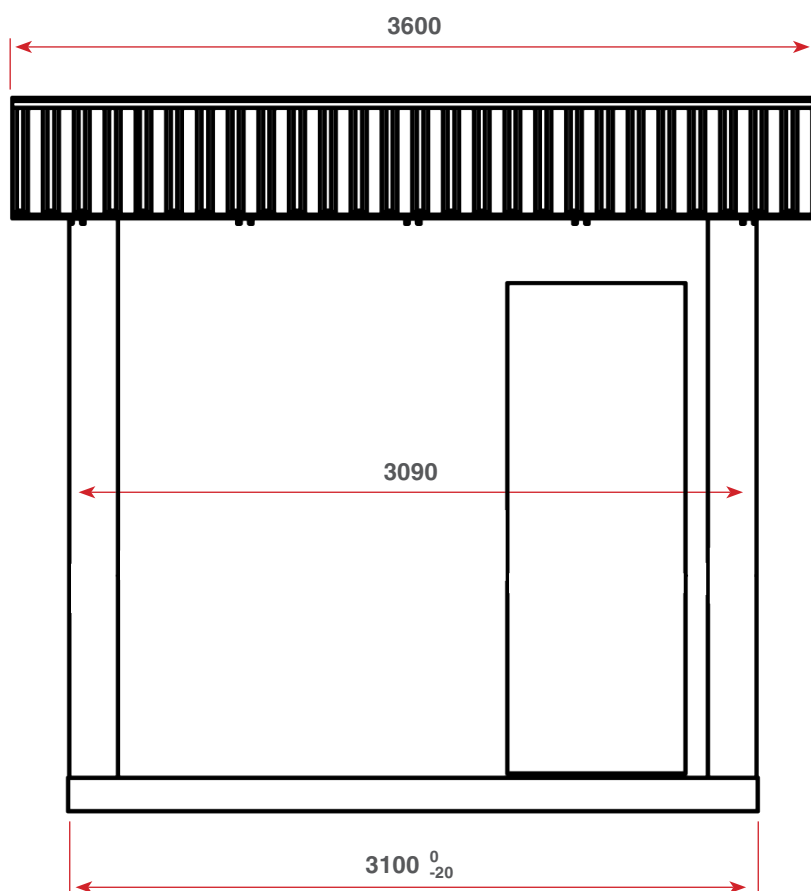
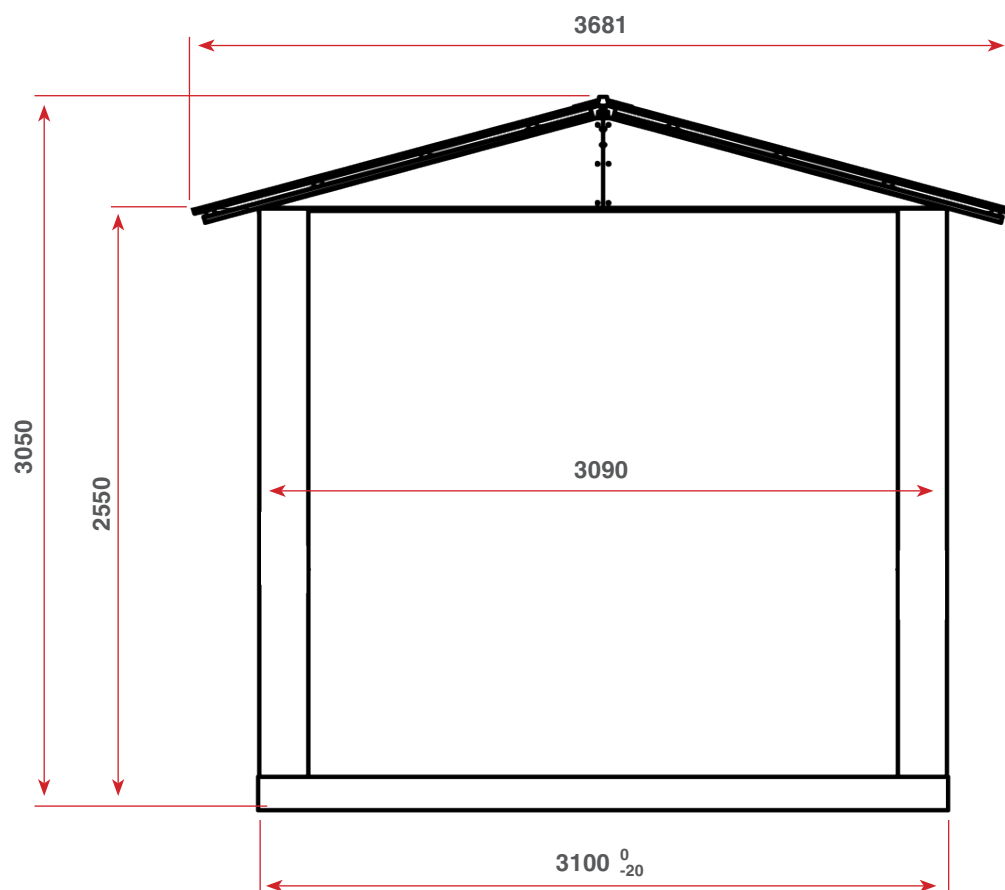
If caution text instructions are not followed, the product may be damaged. It can also result in incorrect operation or capacity decrease.

WARNING!

If warning text instructions are not followed, it could result in serious or life-threatening injuries.

OVERVIEW

Dimensions



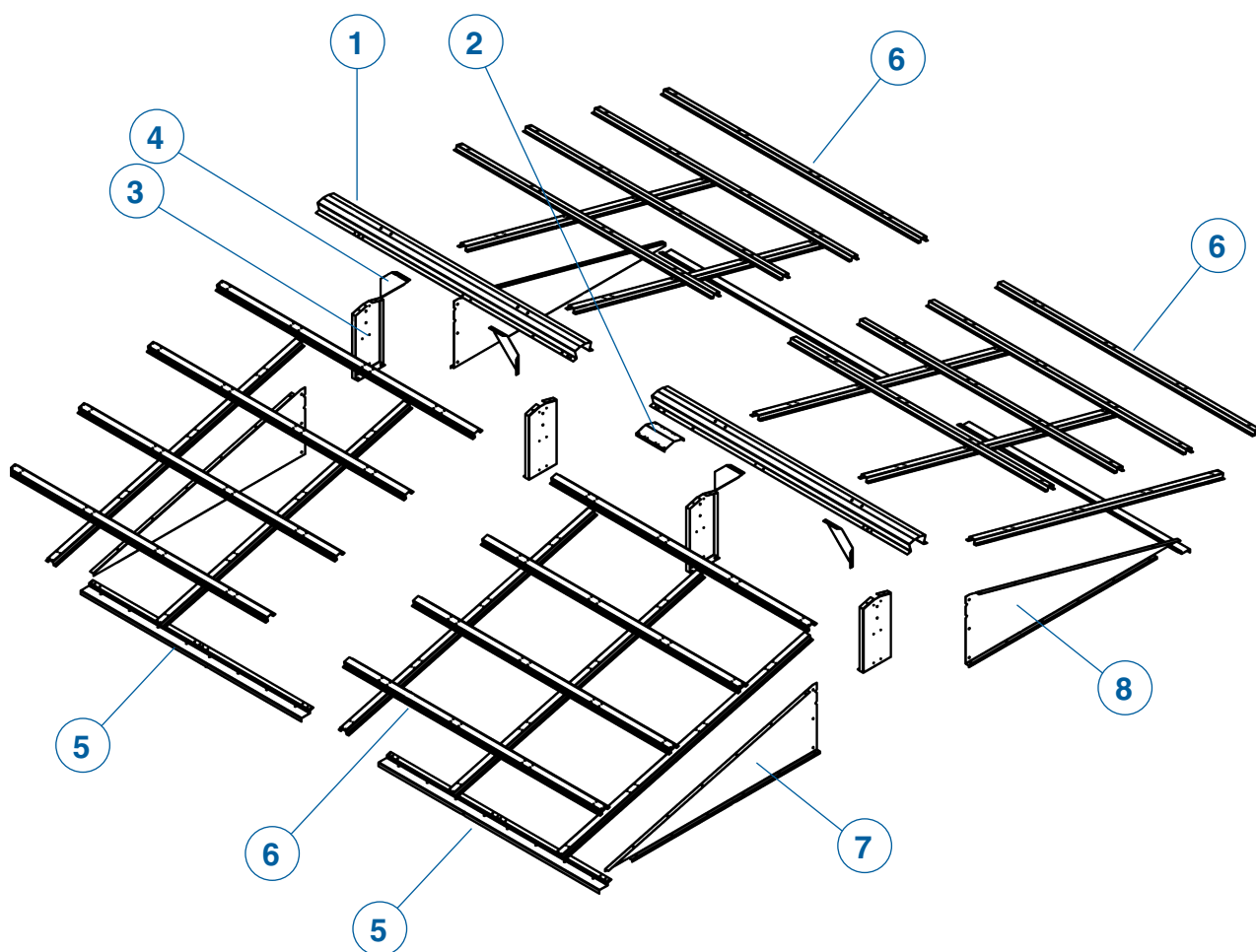
Delivery contents

DESCRIPTION	PCS
Corner pole	4
Top bar	4
Element 3020	7
Element 2800	4
Door	1
Plinth thermo stud	3
Plinth list	4
Vertical corner list	4
Horizontal corner list	4
U-list 2150	2
U-list 1150	2
Grid Ø200	2
Element screw	48
List screw	70
Pillar seal	3 rullaa
Plinth tape	12,5m

Delivery contents: roof

PART	DESCRIPTION	PCS
1	Ridge bar	2
2	Ridge extension	1
3	Ridge bracket	4
4	Ridge support	4
5	Eaves support	4
6	Roof list	26
7	Gable, left	2
8	Gable, right	2

	Roof profile	7
	Ridge panel	2
	Flue pipe 0,5m	1
	Flue pipe bind	1
	Cover plate pair Ø630	2
	Cover plate pair Ø200	1
	Drill screw 6,3mm	100
	Plate screw 6,3mm	250
	Roof screw (black)	120

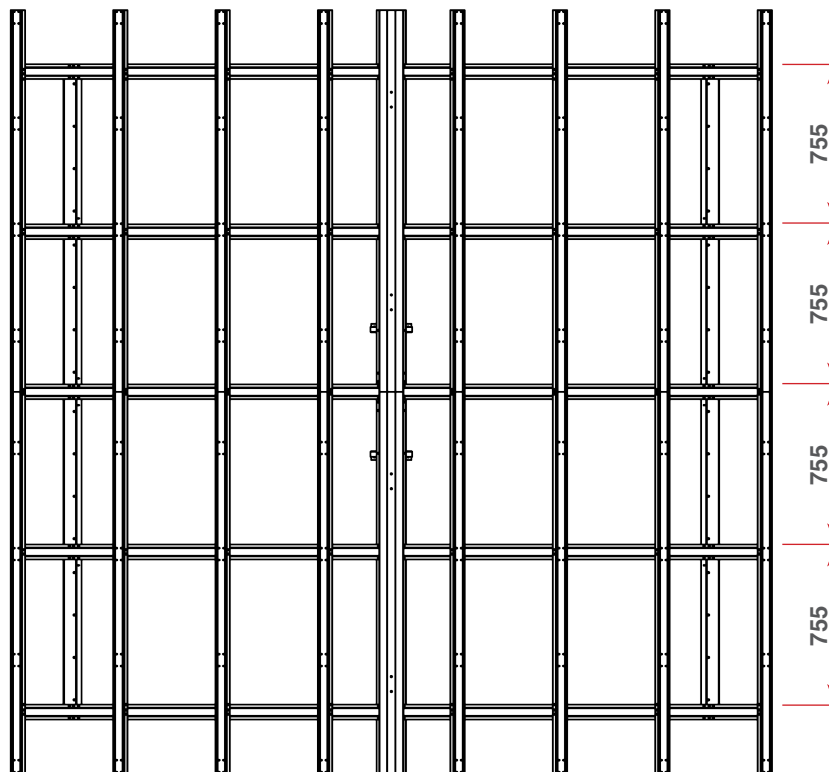
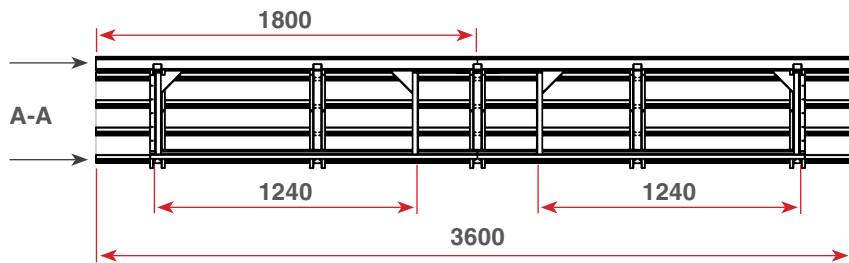
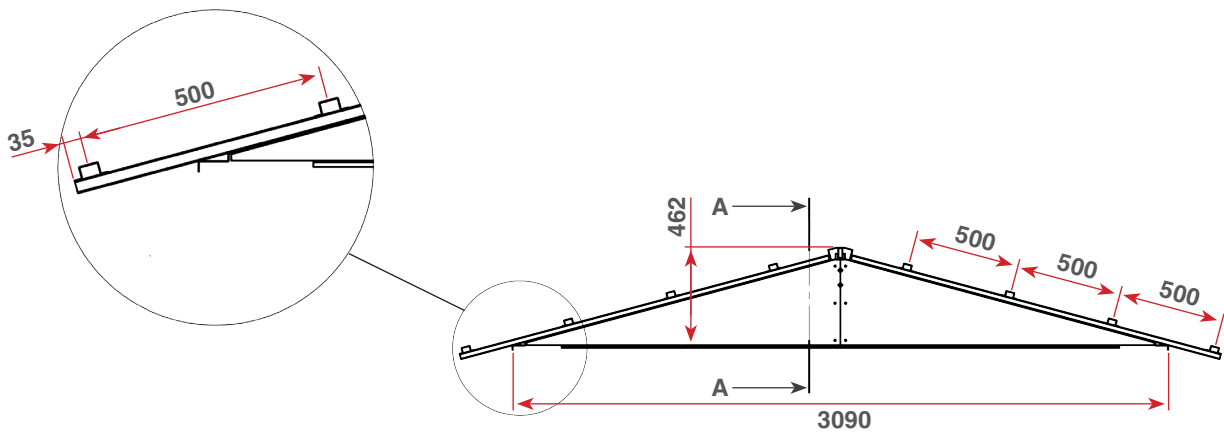


	DESCRIPTION	PCS
	Plinth list 3150mm	4
	Corner list (vertical) 2530mm	4
	Corner list (horizontal) 3150mm	4
	Doorway edge 2150mm	2
	Doorway edge 1150mm	2
	Plinth thermo stud 4000mm	3

ASSEMBLY INSTRUCTIONS

- Assemble the heater room according to separate TPE Spirit Panel assembly instructions.
- Foundation dimensions max. 3100 x 3100.
- Attach the foundation wall list according to drawing number D10.
- Openings for door and pipe connections are made according to the placement of the heater.
- Positioning the door is worth taking into account the required burner maintenance space (800mm free space in front of the burner).
- Door hole 15mm / edge higher than the door frame (1020 x 2190).
- Attach 102 x 20 U-list to doorway edges.
- Attach the door with screws / urethane foam.
- The air pipe opening is made in the height of the heater pipe connection.
- The flue pipe opening is made in the height of the chimney pipe connection.
- The inlet pipe opening is made in height of the fan inlet opening.
- Seal the gaps of the pipes and elements with sealing compound.
- Replacement air / air vents: make Ø200 openings to the wall, down close to the burner and up to the opposite wall. The openings are covered with grids.
- Heater room dimensions (W x L x H): without the lists 3040 x 3040 x 2550 / with lists 3090 x 3090 x 2550.

Roof assembly





Arskametalli Oy
Saarentantie 33
FI-31400 Somero

www.arskametalli.fi