



# SQUARE SILO SYSTEMS

[www.arskametalli.fi](http://www.arskametalli.fi)



# SQUARE SILO IS HOME FOR THE DRYER AND STORAGE FOR THE GRAIN

There are suitable models both for a ranch feed grain drying and storing as for a large farm's commercial harvest handling. If needed, it's possible to organize the space for a sorting facility into a same building.

Element structured silos work as side walls of the Arska square silo. Number of silos and total height will vary according to the size of the square silo.

Machinery and the construction elements are made of high quality raw materials with professional manners and experience. Outer surfaces of the wall elements can also be supplied painted.

Square silo is most favorable to construct on the slope terrain to accomplish the convenient emptying and use of space. Drive-under silo shutters are directed diagonally towards the car platform below. Square silo constructed on flat terrain is emptied with an elevator.

## OPTIONS

- + Grid for intake pit
- + Double or slide doors
- + Manhole for silo top or side
- + Heater room
- + Stairs



*Spacious upstairs*



*Strong silo bases*



*Sturdy stair steps and platforms*

## WITH 2m ELEMENTS

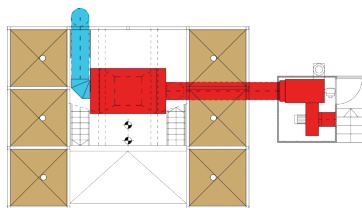
## WITH 2,5m ELEMENTS

### 4x3 / SILOS 6+2

Base size 8,55 x 6,44m

5 layers / volume 138,8m<sup>3</sup>

6 layers / volume 169,2m<sup>3</sup>



### 4x3 / SILOS 6+2

Base size 10,55 x 7,94m

6 layers / volume 250,4m<sup>3</sup>

7 layers / volume 296,8m<sup>3</sup>

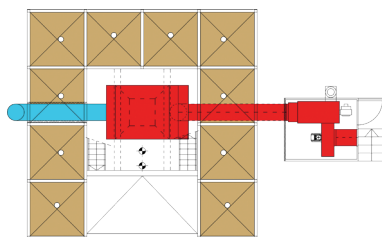
### 4x4 / SILOS 10+2

Base size 8,55 x 8,55m

7 layers / volume 299,6m<sup>3</sup>

8 layers / volume 345,2m<sup>3</sup>

9 layers / volume 390,8m<sup>3</sup>



### 4x4 / SILOS 10+2

Base size 10,55 x 10,55m

7 layers / volume 468,4m<sup>3</sup>

8 layers / volume 538,0m<sup>3</sup>

9 layers / volume 607,6m<sup>3</sup>

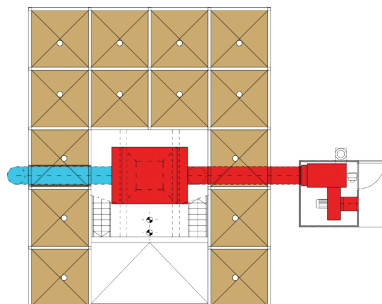
### 4x5 / SILOS 14+2

Base size 8,55 x 10,66m

7 layers / volume 414,4m<sup>3</sup>

8 layers / volume 472,0m<sup>3</sup>

9 layers / volume 529,6m<sup>3</sup>



### 4x5 / SILOS 14+2

Base size 10,55 x 13,16m

7 layers / volume 640,0m<sup>3</sup>

8 layers / volume 732,8m<sup>3</sup>

9 layers / volume 825,6m<sup>3</sup>

Discover the features of the square silo  
by watching a 360° video! [www.arskametalli.fi](http://www.arskametalli.fi)



### WALL ELEMENTS

200 x 200cm | volume 3,8m<sup>3</sup> | height 86cm

200 x 250cm | volume 4,8m<sup>3</sup> | height 86cm

250 x 250cm | volume 5,8m<sup>3</sup> | height 86cm

- Made of galvanized steel
- Material thickness 1,5 – 2mm
- End material thickness 3mm

### SILO BASES

200 x 200cm | volume 1,2m<sup>3</sup> | height 87cm

200 x 250cm | volume 1,8m<sup>3</sup> | height 100cm

250 x 250cm | volume 2,3m<sup>3</sup> | height 123cm


- Straight or 45° outlet
- Equipped with knife or valve shutter



[www.arskametalli.fi](http://www.arskametalli.fi)

## ARSKAMETALLI OY

 Saarentaantie 33  
FI-31400 Somero, Finland

 +358 2 748 9700

 [posti@arskametalli.fi](mailto:posti@arskametalli.fi)

© Arskametalli Oy 2020

All rights reserved. In the photos in this brochure or other publications may occur devices which are not standard equipment. Technical specifications are approximate.