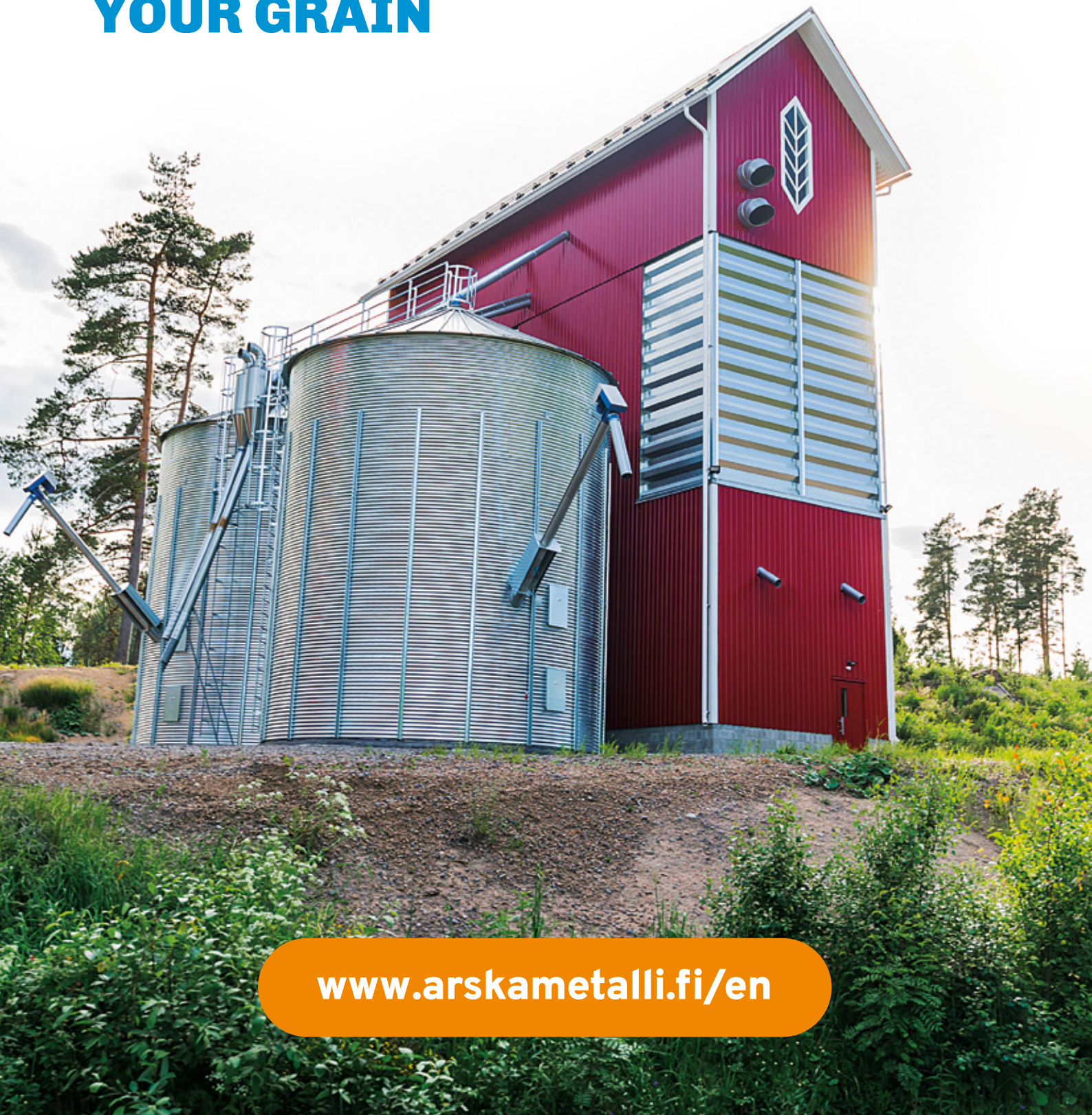




**EVERYTHING YOU NEED FOR
DRYING AND STORING
YOUR GRAIN**



www.arskametalli.fi/en

Our production facilities are located in Somero in Southwest Finland. Watch our corporate video: www.arskametalli.fi/en



OUR VALUES

1 THE CUSTOMER IS ALWAYS NUMBER ONE FOR US

We provide training and technical support to each client. Our business is based on customer satisfaction, which we get by making the grain handling equipment efficient and competitive.

2 PROVEN QUALITY

All Arska products are designed and manufactured in Finland. We offer products that last over the years from generation to generation. We have been allocated the CE marking for structural welded steel components and kits.

3 A PIONEER IN SUSTAINABLE DEVELOPMENT

We are constantly striving to make our production more responsible and environmentally friendly. It's important for us to bear our responsibility for the production of clean food - now and in the future.

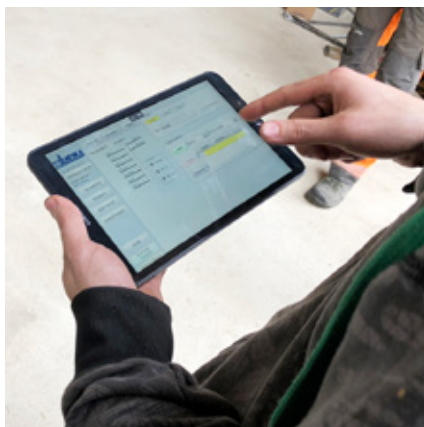
ARSKAMETALLI OY

TRADITIONAL FINNISH FAMILY COMPANY FOUNDED IN 1958



FAIR WARRANTIES!

- Heat exchangers: 8 years
- Grain dryers: 5 years
- Grain bins and silos: 5 years
- Elevators: 5 years
- Electrical parts: 1 year



ECONOMICAL AND EFFICIENT GRAIN DRYERS



Designing the structures and details of the Arska dryers, we paid attention to costs of drying and the quality of the outcome. The best features of the dryers can be found beneath the surface and there's a lot of details.

Our products have been developed based on the feedback received from farmers over many decades of experience.



DRIES IN DEMANDING CIRCUMSTANCES

Araska dryers are designed for northern conditions. They allow energy-efficient drying of very wet grain and maintain excellent quality.



BATCH OR CONTINUOUS FLOW DRYING

In batch drying the grain moisture does not affect the end result. All Araska dryers are available as fast continuous flow dryers.



YOU DECIDE THE FORM OF ENERGY

There's multiple energy options for Araska dryers, for example oil, gas or biofuels.



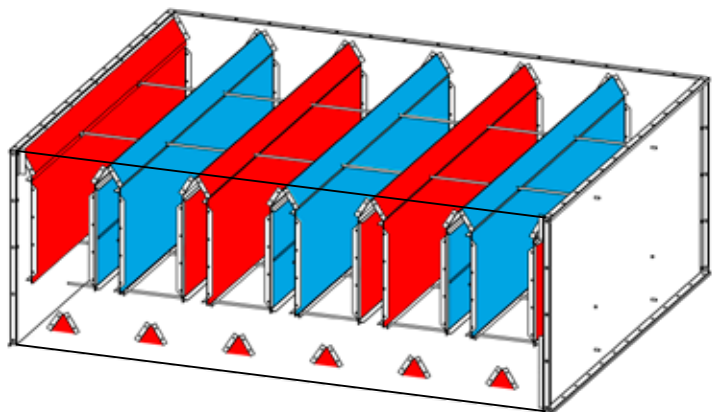
■ FIRE SAFE NOTCH CELL STRUCTURE

Arska heat cells have a notch cell structure, where grain doesn't swell and you can load the dryer full of grain. The structure prevents the grain to get to heater's air pipe, which makes the dryer more fire safe.

Grain moves as an equal layer at the both outlet and inlet sides of the air channels in the heat cell. Outlet air channel's permeability is remarkably higher compared to the inlet air channel, so the humidity exits efficiently and the internal remains clean. Spreading ridges supplement the mixing of the grain layer and prevent condensation.

Cross track feeder works reliably with all grain species along the small grains. Feed speed is adjusted variably with a frequency inverter. Grain flow stays the same from start to finish of drying, regardless of grain moisture. Feed speed increases during the cooling automatically.

Bottom fan keeps the base in vacuum pressure, so moisture and dust doesn't reach inside the elevator.



ALL ARSKA DRYERS CONSIST OF THE SAME COMPONENTS

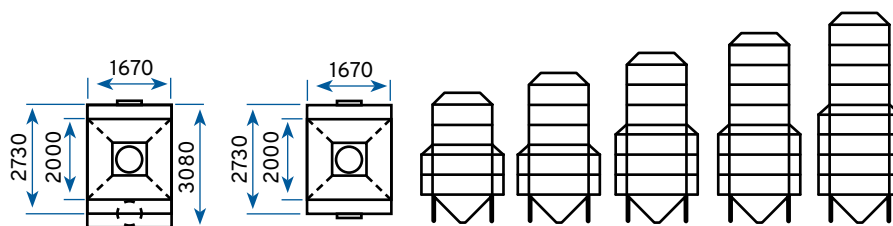
Four basic models (Plantaasi, Special, Magnum and Farmi) are used in stationary and mobile dryers. The basis for designing dryers is to achieve energy-efficient drying, a reliable and easy-to-use machinery. Arska dryers have versatile structures, which enables customer-specific customization.

OPTIONS FOR DRYERS

- + Wide range of intake hoppers
- + Seed Cleaners
- + Cyclones
- + GSM alarm
- + Control automation
- + Scale device
- + Additional switch for feeder
- + Rain covers for motors
- + Motored shutter for heat cell (Special / Magnum)

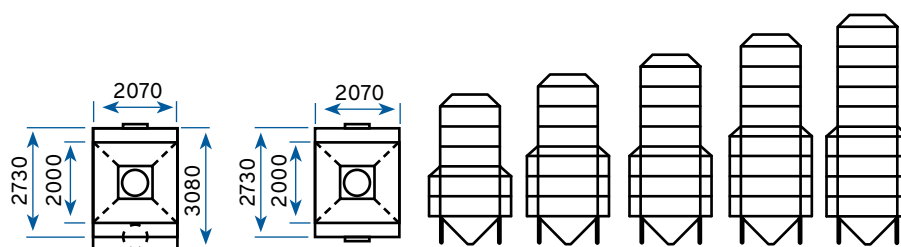
* Recommendation. Drying capacities calculated with wheat with 85°C drying air temperature, moisture content from 18% to 14%. Filling, cooling and discharge times are not included. Capacities stated are to be considered as guidelines only. Other volumes also available!

PLANTAASI



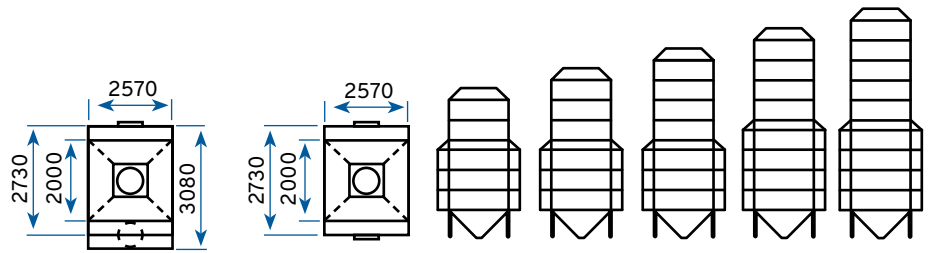
PLANTAASI	2,5+2	2,5+3	3,5+3	3,5+4	4,5+4
Capacity [t / h]	1,9	1,9	3,9	3,9	4,7
Total volume [m ³]	12,8	15,7	17,9	20,8	23,0
Heat cell volume [m ³]	5,4	5,4	7,6	7,6	9,8
Storage container volume [m ³]	5,8	8,7	8,7	11,6	11,6
Dryer height [m]	7,9	8,8	9,7	11,0	11,6
Elevator min. height [m]	9,5	10,5	11,5	12,5	13,5
Elevator [model] *	A68	A68	A68	A68	A68
Pre-cleaner [model] *	A200	A200	A200	A200	A200
Heater [model] *	3000S	3000S	4000S	4000S	6000S
Bottom fan [kW] *	0,75	0,75	0,75	0,75	0,75
Fuse size [A] *	25	25	25	25	35
Feeder 0,7m ³	Heat cell 2,2m ³	Levelling cell 1,3m ³	Storage container 2,9m ³	Cover 0,9m ³	

SPECIAL



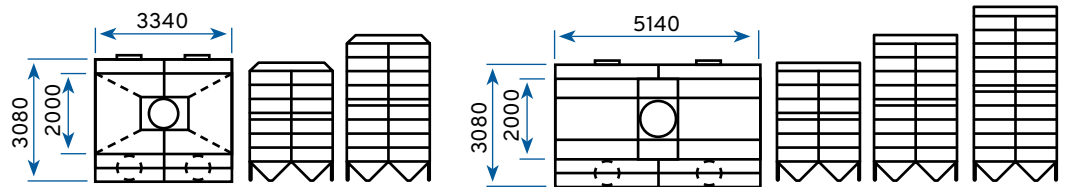
SPECIAL	2,5+3	3,5+3	3,5+4	4,5+4	4,5+5
Capacity [t / h]	3,9	4,7	4,7	6,3	6,3
Total volume [m ³]	19,3	22,0	25,6	28,3	31,9
Heat cell volume [m ³]	6,7	9,4	9,4	12,1	12,1
Storage container volume [m ³]	10,8	10,8	14,4	14,4	18,0
Dryer height [m]	7,2	8,1	9,0	9,9	10,9
Elevator min. height [m]	11,0	12,0	13,0	14,0	15,0
Elevator [model] *	A68	A68	A68	A92	A92
Pre-cleaner [model] *	A200	A200	A200	A250	A250
Heater [model] *	4000S	6000S	6000S	6500S	6500S
Bottom fan [kW] *	1,5	1,5	1,5	1,5	1,5
Fuse size [A] *	25	35	35	50	50
Feeder 0,8m ³	Heat cell 2,7m ³	Levelling cell 1,3m ³	Storage container 3,6m ³	Cover 1,0m ³	

MAGNUM



MAGNUM	3,5+2	3,5+3	3,5+4	4,5+4	4,5+5
Capacity [t / h]	4,7	4,7	4,7	6,3	6,3
Total volume [m ³]	24,1	28,6	33,1	36,7	41,2
Heat cell volume [m ³]	12,8	12,8	12,8	16,4	16,4
Storage container volume [m ³]	9,0	13,5	18,0	18,0	22,5
Dryer height [m]	6,7	7,6	8,6	9,5	10,4
Elevator min. height [m]	11,5	12,5	13,5	14,5	15,5
Elevator [model] *	A68	A68	A68	A92	A92
Pre-cleaner [model] *	A200	A200	A200	A250	A250
Heater [model] *	6000S	6000S	6000S	6500S	6500S
Bottom fan [kW] *	1.5	1.5	1.5	1.5	1.5
Fuse size [A] *	35	35	35	50	50
Feeder 1,2m ³	Heat cell 3,6m ³	Levelling cell 1,7m ³	Storage container 4,5m ³	Cover 1,4m ³	

FARMI



FARMI (PLANTAASI / MAGNUM)	FP 3,5+3	FP 4,5+4	FM 3,5+3	FM 4,5+4	FM 5,5+5
Capacity [t / h]	7,8	9,4	9,4	12,6	17,4
Total volume [m ³]	35,8	46,0	57,2	73,4	89,6
Heat cell volume [m ³]	15,2	19,6	25,0	32,2	39,4
Storage container volume [m ³]	17,4	23,2	27,0	36,0	45,0
Dryer height [m]	9,0	10,8	9,8	11,6	13,5
Elevator min. height [m]	13,0	15,0	15,0	16,5	18,5
Elevator [model] *	A92	A92	A118	A118	A118
Pre-cleaner [model] *	A300	A300	A300	A300	A300
Heater [model] *	2 x 4000S	2 x 6000S	2 x 6000S	2 x 6500S	2 x 6500S
Bottom fan [kW] *	2 x 0.75	2 x 0.75	2 x 1.5	2 x 1.5	2 x 1.5
Fuse size [A] *	50	63	63	80	80
FP	Feeder 1,4m ³	Heat cell 4,4m ³	Levelling cell 2,6m ³	Storage container 5,8m ³	Cover 1,8m ³
FM	Feeder 2,4m ³	Heat cell 7,2m ³	Levelling cell 3,4m ³	Storage container 9,0m ³	Cover 2,8m ³

**WATCH A FAST
MOTION VIDEO
OF THE ASSEMBLY!**
www.arskametalli.fi/en



SW MOBILE DRYERS

NOW WITH EVEN MORE STANDARD EQUIPMENTS

Mobile dryer works without bottom conveyor. The structure allows the elevator to provide full discharge power. Also the possible damage of grain is reduced. SW mobile dryer is cost-effective, quickly assembled and easy to move from one place to another. The dryer is electrified ready by the manufacturer with its standard equipments. Machinery is a Magnum model.

STANDARD EQUIPMENTS

- ✓ Elevator
- ✓ Elevator service platform and supports
- ✓ Motored 3-divider
- ✓ Overpressure heater
- ✓ Control panel
- ✓ Pre-cleaner
- ✓ Bottom fan 1.5kW
- ✓ Service platform and ladder
- ✓ Supply cable 10m
- ✓ Circulate piping
- ✓ Rain covers for burner, elevator and pre-cleaner
- ✓ Work lights
- ✓ Frame steps and railings



SW	1,5+1,5	2,5+2	2,5+2,5	3,5+3	3,5+4	4,5+4	4,5+5
Capacity [t / h]	2,8	3,9	3,9	4,7	4,7	6,3	6,3
Total volume [m ³]	14,4	20,5	22,5	28,6	33,1	36,7	41,2
Heat cell volume [m ³]	5,3	8,9	8,9	12,5	12,5	16,1	16,1
Storage container volume [m ³]	6,5	9,0	11,0	13,5	18,0	18,0	22,5
Dryer height [m]	6,5	7,9	8,3	9,7	10,7	11,6	12,5
Elevator min. height [m]	9,8	11,3	11,8	13,3	14,6	15,6	16,6
Elevator [model] *	A68	A68	A68	A68	A92	A92	A92
Pre-cleaner [model] *	A200	A200	A200	A200	A250	A250	A250
Heater [model] *	3000S	4000S	4000S	6000S	6000S	6500S	6500S
Fuse size [A] *	25	25	25	35	35	50	50

* Recommendation. Drying capacities calculated with wheat with 85°C drying air temperature, moisture content from 18% to 14%. Filling, cooling and discharge times are not included. Capacities stated are to be considered as guidelines only. Other volumes also available!



MW MOBILE DRYERS ARE EQUIPPED WITH EFFICIENT VACUUM HEATER

Designed for large harvest areas, MW mobile dryers are equipped with energy efficient vacuum heater and also with powerful and gentle JEMA bottom conveyor. Highly efficient centrifugal or axial fans ensure that the drying is cost-effective. The dryer is electrified ready by the manufacturer with it's standard equipments Machinery is a Farmi-Magnum model.



STANDARD EQUIPMENTS

- ✓ Elevator
- ✓ Elevator service platform and supports
- ✓ Vacuum heater
- ✓ Control panel
- ✓ Pre-cleaner A300
- ✓ JEMA bottom conveyor
- ✓ Service platform and ladder
- ✓ Supply cable 10m
- ✓ Circulate piping

MW	2,5+3	3,5+3	3,5+4	4,5+4	4,5+5	5,5+5
Capacity [t / h]	7,8	9,4	9,4	12,6	12,6	17,4
Total volume [m ³]	50,0	57,2	66,2	73,4	82,4	89,6
Heat cell volume [m ³]	17,8	25,0	25,0	32,2	32,2	39,4
Storage container volume [m ³]	27,0	27,0	36,0	36,0	45,0	45,0
Dryer height [m]	9,1	10,0	11,0	11,9	12,8	13,7
Elevator min. height [m]	14,0	15,0	16,0	17,0	18,0	18,5
Elevator [model] *	A92	A92	A92	A118	A118	A118
Heater [model] *	5500S	7000S	7000S	8000S	8000S	2 x 5500S
Fuse size [A] *	50	50	50	80	80	100

* Recommendation. Drying capacities calculated with wheat with 85°C drying air temperature, moisture content from 18% to 14%. Filling, cooling and discharge times are not included. Capacities stated are to be considered as guidelines only. Other volumes also available!



COMPACT DRYER IS EVEN SUITABLE FOR EXISTING BUILDINGS

Compact is suitable in all locations, where electricity is available – for example, in a feed storage or a machine garage. All you need is a concrete base and enough height for the elevator. The dryer's heat source is located separately from the base frame, so the dryer can easily be placed inside the building. The dryer can also be supplied with a bottom conveyor, which makes the structure lower. The dryer is electrified ready by the manufacturer with it's standard equipments. Machinery is a Special or Magnum model.

NEW PRODUCT 2023: Compact is now also available as a mobile dryer version!



STANDARD EQUIPMENTS

- ✓ Elevator
- ✓ Overpressure heater
- ✓ Control panel
- ✓ Pre-cleaner
- ✓ Bottom fan 1.5kW
- ✓ Tipping hopper 1x3m 1.5kW
- ✓ Service platform and ladder
- ✓ Air piping 3m
- ✓ Circulate piping

COMPACT (S)	2,5+2	2,5+3	3,5+3	3,5+4	4,5+4
Capacity [t / h]	3,9	3,9	4,7	4,7	6,3
Total volume [m ³]	15,7	19,3	22,0	25,6	28,3
Heat cell volume [m ³]	6,7	6,7	9,4	9,4	12,1
Storage container volume [m ³]	7,2	10,8	10,8	14,4	14,4
Dryer height [m]	8,0	8,9	9,8	10,7	11,6
Elevator min. height [m]	11,0	11,5	12,5	13,5	14,5
Elevator [model] *	A68	A68	A68	A68	A68
Pre-cleaner [model] *	A200	A200	A200	A200	A200
Heater [model] *	4000S	4000S	6000S	6000S	6500S
Fuse size [A] *	25	25	35	35	50

COMPACT (M)	3,5+2	3,5+3	3,5+4	4,5+4	4,5+5
Capacity [t / h]	4,7	4,7	4,7	6,3	6,3
Total volume [m ³]	24,1	28,6	33,1	36,7	41,2
Heat cell volume [m ³]	12,5	12,5	12,5	16,1	16,1
Storage container volume [m ³]	9,0	13,5	18,0	18,0	22,5
Dryer height [m]	8,9	9,8	10,7	11,6	12,6
Elevator min. height [m]	12,0	13,0	13,5	15,0	16,0
Elevator [model] *	A68	A68	A68	A92	A92
Pre-cleaner [model] *	A200	A200	A200	A250	A250
Heater [model] *	6000S	6000S	6000S	6500S	6500S
Fuse size [A] *	35	35	35	50	50

* Recommendation. Drying capacities calculated with wheat with 85°C drying air temperature, moisture content from 18% to 14%. Filling, cooling and discharge times are not included. Capacities stated are to be considered as guidelines only. Other volumes also available!

TANDEM DOUBLE DRYERS HAVE TWO MACHINERIES, ONE FRAME AND ONE HEAT SOURCE

Tandem double dryer has two dryers combined into one frame to create a dual batch dryer. The dryer operates with 4-way divider which is connected to the heat source and the cooling fan. Grain dries in one dryer while the second is being cooled, emptied and re-filled.

Both dryers have their own elevators for recycling and discharging. For filling there's a third elevator. Machinery consists of two Special models.

STANDARD EQUIPMENTS

- ✓ 3x elevator
- ✓ Overpressure heater, vacuum heater or EcoHeater bio heater
- ✓ Control panel
- ✓ 2 x pre-cleaner A200
- ✓ Tipping hopper 1x3m 1.5kW
- ✓ 2 x bottom fan 1.5kW
- ✓ Service platform and ladder
- ✓ Circulate piping



TANDEM	2 x 2,5+3	2 x 3,5+3	2 x 4,5+4
Capacity [t / h]	7,8	9,4	12,6
Total volume [m ³]	38,6	44,0	56,6
Heat cell volume [m ³]	13,4	18,8	24,2
Storage container volume [m ³]	21,6	21,6	28,8
Dryer height [m]	10,8	12,6	14,5
Elevator min. height [m] / fill elevator min. height [m]	11,0 / 13,0	12,0 / 14,0	14,0 / 16,0
Elevator [model] *	A68	A68	A68
Fuse size [A] *	25	35	50

* Recommendation. Drying capacities calculated with wheat with 85°C drying air temperature, moisture content from 18% to 14%. Filling, cooling and discharge times are not included. Capacities stated are to be considered as guidelines only. Other volumes also available!

RELIABLE CONTROL SYSTEMS

CONTROL PANEL

Highly automated hardware gives farmer an opportunity for a decent night sleep. Reliable system makes using the dryer smooth and easy. Water and dust proof cover protects the parts inside. High quality control panel is made in Finland and the automation is designed and produced specifically for Arska dryers.

STANDARD EQUIPMENTS

- ✓ Y-Δ start for fan
- ✓ Soft start for elevator
- ✓ Digital ammeter for elevator
- ✓ Automatic re-start in case of a blackout
- ✓ Hour meter
- ✓ Mechanic cooling timer
- ✓ Drying and cooling automation
- ✓ Digital thermostats
- ✓ Feeder speed controlled with variable frequency inverter



CONTROL AUTOMATION

With modular control system you can control the grain dryer easily with tablet or computer! A wireless system can be easily varied in different dryers without redesigning the program code. You can add dividers, conveyors and other products afterwards by configuring from the user interface.

The system has a stand-by for several simultaneous dryers. The drying cycle can be controlled and monitored from the main page. User can see the real-time state of the entire hardware at one glance from the screen.



OPTIONS

+ GSM alarm (provides information via SMS of cooling time starting or ending and of possible malfunctions in the dryer)

- + Additional switch for feeder
- + Motored shutter for heat cell (Special / Magnum)
- + Fill automation

ECONOMIC AND EFFICIENT HEAT SOURCES

Overpressure and vacuum heaters known for their reliability and high efficiency produce heat with oil, gas or biofuels. Fire chambers and heat exchangers made of stainless, fire-proof steel ensure long service life of the furnaces.

OIL HEATERS

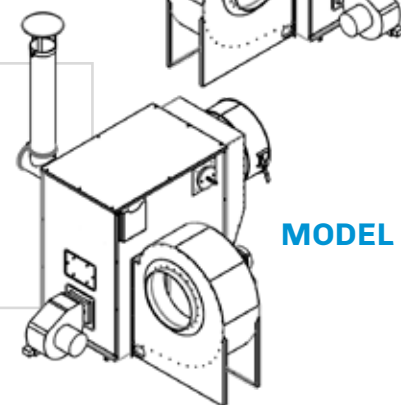
OVERPRESSURE HEATERS

In a cylindrical furnace the flame burns freely in the middle and heats evenly. Furnance is made of high quality special steel, which temperature level of peeling is 1050°C.

With top quality materials and clever designing we've made the heaters easy to maintain. Outer walls are made from galvanized steel, which withstands even harsh circumstances. Even though the heater's external dimensions are minor, they are sustainable and their oil consumption is low.



MODEL A



MODEL B

STANDARD EQUIPMENTS

- ✓ Oilon 2-stage burner
- ✓ Drying temperature thermostat
- ✓ Overheat thermostat
- ✓ Heat exchanger + fan
- ✓ Flue piping (4m) with sooth hatch

OPTIONS

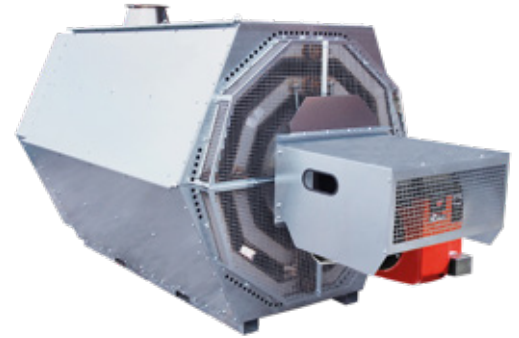
- + Rain cover for oil burner
- + Tube brushes
- + Heater room (for overpressure heaters)

OVERPRESSURE HEATERS	3000S	4000S	6000S	6500S
Air amount [m ³ / h]	10 900	15 300	18 600	24 300
Max. oil consumption [kg / h]	17,1	24,3	30,0	40,1
Max. heat power [kW]	178	254	310	412
Motor [kW]	4.0	5.5	7.5	11.0
Length with burner [cm]	184,0	200,0	200,0	255,0
Width with fan [cm]	167,0	183,5	199,0	208,0
Width [cm]	71,0	83,0	83,0	83,0
Height [cm]	139,0	164,0	164,0	182,0

VACUUM HEATERS

Vacuum heater provides sufficient heat power economically and efficiently for large dryers as well. Vacuum heaters are equipped with burner rain cover.

VACUUM HEATERS	5500S	7000S	8000S
Air amount [m ³ / h]	30 600	37 200	48 600
Max. oil consumption [kg / h]	55	70	80
Max. heat power [kW]	556	712	819
Motor [kW]	2 x 5.5	2 x 7.5	2 x 11
Length with burner [cm]	351,0	351,0	351,0
Width [cm]	145,0	145,0	145,0
Height [cm]	145,0	145,0	145,0



GAS BURNERS

The efficient Arska gas burners can use natural gas, liquid gas or bio gas as fuel. The gas burns very purely so it can be burned directly in the drying air. No energy is lost so the efficiency of the heater is 100%. Exhaust is only water and carbon dioxide.

The maximum thermal power of the channel burners is up to 30 000 kW. The equipment is safe to use, because delivery includes a spark mesh. Gas burner fits to overpressure or vacuum dryers.



BIO HEATERS

Environment friendly and highly economical Arska bio heaters can be equipped with biofuel systems from various manufacturers. With bio heater you can burn wood chips, peat, pellets or pre-cleaning waste.



ECOHEATER

EcoHeater is the first bio heater on the market based on the vacuum technology. The furnace is spacious and the structure of the heater doesn't require high heater room.

BURNER	300	400	500
Air amount [m ³ / h]	18 600	24 300	30 600
Pellet [kg / h]	60	80	100
Max. heat power [kW]	400	500	600
Flue gas fan power [kW]	2,2	2,2	2,2
Length without burner [cm]	309	309	309
Width [cm]	185	185	185
Height [cm]	200	200	200

PRE-HEATER

Pre-heater is an add-on for oil heater. Inlet air is soaked up through the pre-heater and flue gas is lead to heat exchanger of the oil heater. Returning to oil use is easy and fast. Pre-heater is suitable for all heater models, also for other brands!



BURNER	300	400	500
Air amount [m ³ / h]	18 600	24 300	30 600
Pellet [kg / h]	60	80	100
Max. heat power [kW]	254	412	494
Flue gas fan power [kW]	1,1	1,1	1,1 / 2,2
Length without burner [cm]	180	180	180
Width [cm]	160	160	160
Height [cm]	160 / 200	160 / 200	160 / 200

EFFICIENT GRAIN TRANSFER WITH ELEVATORS

Elevators made of galvanized steel convey the grain fast and reliably without damaging it.

Elevator structure is self-supporting. There are open belt pulleys in the head and bottom. Direct-drive gear motor is reliable in all conditions and almost maintenance-free. Design of the bottom allows maximum filling for the buckets – even with wet grain.

Elevator is easy to clean through large hatches. As an option, pre-cleaner A150 attached to top part keeps working area dust-free while conveying the grain.



- STANDARD EQUIPMENTS**
- ✓ Speed control
 - ✓ 3-way divider
 - ✓ Intake pit inlet
 - ✓ Inlet 4 x Ø200

- OPTIONS**
- + Pre-cleaner A150
 - + Motored 3-way divider
 - + Motored shutter
 - + Inlet 2 x Ø200
 - + Service platform
 - + Supports

ELEVATOR	A68	A92	A118
Capacity [t / h]	68	92	118
Motor [kW]	4	5.5 / 7.5	7.5
Belt width [mm]	140	170	170
Cup amount [pcs / m]	7	6	6
Cup width [mm]	145	180	205
Elevator pipe [Ø mm]	210	280	280
3-way divider [Ø mm]	160	200	200

CLEANING AND SORTING

Square silo's upper floor is clean and dust-free, when there is a pre-cleaner on top of the dryer. Cleaning efficiency can be increased with a fan installed on the top of the elevator, with a cyclone and with a seed cleaner.

PRE-CLEANERS

Pre-cleaner removes impurities from the grain effectively and spreads the grain evenly into the dryer storage container. Pre-cleaner is installed to dryer cover – and to top part of the elevator when wanted the best results, so that there's two pre-cleaners working on the machinery at the same time.



PRE-CLEANER	A150	A200	A250	A300
Grain pipe [Ø mm]	-	160	200	200
Trash pipe [Ø mm]	160	200	200	200
Motor [kW]	0.75	1.5	2.2	2.2 + spreader 0.55
Elevator recommendation [model]	A68 / A92 / A118	A68	A92 / A118	A92 / A118

CYCLONES

Cyclone separates trash from pre-cleaner's exhaust air. Trash is easy lead to dust container or trailer so that the surrounding of the dryer stays clean. Size Ø630, available galvanized or painted. The inlet pipe can be turned. Also a painted Ø1000 cyclone available.



SEED CLEANERS

Seed Cleaner separates damaged grain, weed seeds and other impurities from the grain. These are particles which normal pre-cleaner is not able to remove. Available for Ø200 and Ø250 piping. Clever design allows mounting in almost any dryer – also for other brands!

Regular Seed Cleaner has a sample hatch and spreading plate. All Seed Cleaners have solid, 2mm and 2,5mm standard sieves.

All sieve sizes and grain recommendations:

- 1,8mm: oat, barley
- 2,0mm: oat, barley
- 2,2mm: oat, barley, wheat, rye
- 2,5mm: barley, wheat
- 3,0mm: rapeseed
- 4,0mm: pea, broad bean
- 5,0mm: pea, broad bean



WISDOM SEED CLEANER REJECTS PATHOGENS WITH BLUE LIGHT

LED Tailor Innova7ion and Arskametalli have developed in cooperation WiSDOM SEED technology, which utilizes non-chemical blue light to reject the pathogens on the surface of the seed.

Effective blue lights have been attached to the standard seed cleaner. Blue light doesn't produce any harmful UV radiation. Light technology was awarded at international Quality Innovation Awards competition.



GRAIN SORTER

The affordable, quiet and efficient sorter is equipped with a rotating sieve drum ensuring even sorting results. The small sorter has a sorting capacity of 1000 kg / h.

The sorter includes a pre-cleaner as standard equipment. The speed and inclination angle of screening drums available in several screen hole sizes can be adjusted steplessly while the machine is in operation.

SQUARE SILO SYSTEMS ARE A HOME FOR THE DRYER AND STORAGE FOR THE GRAIN

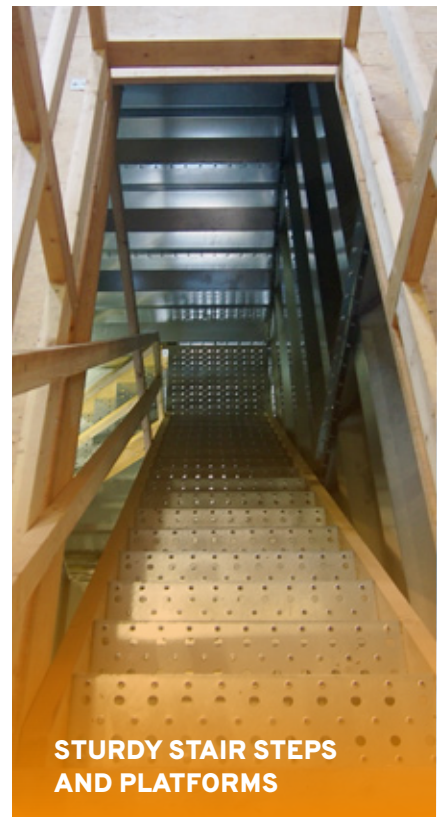
Element structured silos work as side walls of the Arska square silo. Machinery and the construction elements are made of high quality raw materials with professional manners and experience. Outer surfaces of the wall elements can also be supplied painted.



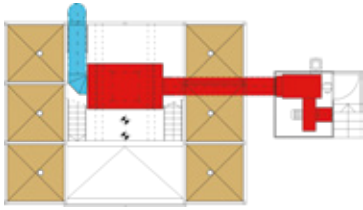
SPACIOUS UPSTAIRS



STRONG SILO BASES



**STURDY STAIR STEPS
AND PLATFORMS**



4x3 / SILOS 6+2

With 200 x 200cm elements

Base size 8,55 x 6,44m

5 layers / volume 138,8m³

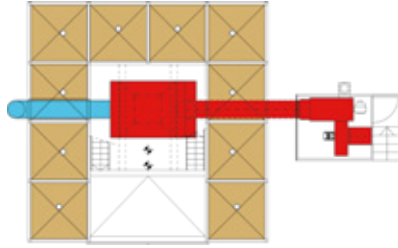
6 layers / volume 169,2m³

With 250 x 250cm elements

Base size 10,55 x 7,94m

6 layers / volume 250,4m³

7 layers / volume 296,8m³



4x4 / SILOS 10+2

With 200 x 200cm elements

Base size 8,55 x 8,55m

7 layers / volume 299,6m³

8 layers / volume 345,2m³

9 layers / volume 390,8m³

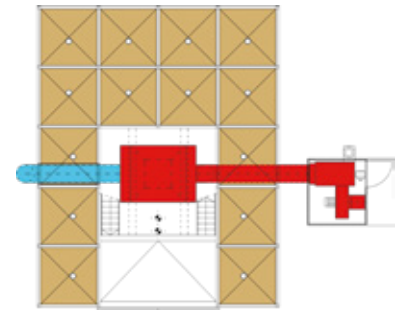
With 250 x 250cm elements

Base size 10,55 x 10,55m

7 layers / volume 468,4m³

8 layers / volume 538,0m³

9 layers / volume 607,6m³



4x5 / SILOS 14+2

With 200 x 200cm elements

Base size 8,55 x 10,66m

7 layers / volume 414,4m³

8 layers / volume 472,0m³

9 layers / volume 529,6m³

With 250 x 250cm elements

Base size 10,55 x 13,16m

7 layers / volume 640,0m³

8 layers / volume 732,8m³

9 layers / volume 825,6m³

OPTIONS

- + Grid for intake pit
- + Double or slide doors
- + Manhole for silo top or side
- + Heater room
- + Stairs

**DISCOVER THE
FEATURES OF THE
SQUARE SILO
BY WATCHING A
360° VIDEO!**
www.arskametalli.fi



WALL ELEMENTS

200 x 200cm / height 86cm / volume 3,8m³

200 x 250cm / height 86cm / volume 4,8m³

250 x 250cm / height 86cm / volume 5,8m³

- Made of galvanized steel
- Material thickness 1,5 – 2mm
- End material thickness 3mm

SILO BASES

200 x 200cm / height 87cm / volume 1,2m³

200 x 250cm / height 100cm / volume 1,8m³

250 x 250cm / height 123cm / volume 2,3m³

- Straight or 45° outlet
- Equipped with knife or valve shutter

HIGH QUALITY, LOW COST GRAIN BINS ARE THE SOLUTION TO YOUR STORING PROBLEMS

Inside Arska grain bin's tight walls the grain is safe from wind, blizzards and rodents.



Modern bins are affordable and easy to to mount. Strong, roll formed wall elements are easy to attach to each other with bolt joints. Grain bins have been designed to meet the requirements of modern grain storage down to the smallest details. Bins are suitable for storage of all types of grain.

STANDARD EQUIPMENTS

- ✓ Fill inlet on the roof Ø160 / Ø200 / Ø250
- ✓ Manholes on the roof and wall
- ✓ Inlet and cover pipe for auger
- ✓ Wall ladder with safety cages
- ✓ Roof ladder
- ✓ Wall stiffeners

OPTIONS

- + Discharge augers and conveyors
- + Wall support for conveyor
- + 45° or 30° steel hopper bottom
- + Ventilation system for steel hopper
- + Mechanic grain level monitor



FLAT BOTTOM BINS

Ø / LAYER	VOLUME [m³]	WALL HEIGHT [cm]	HEIGHT [cm]
480cm / 4	68	330	450
480cm / 5	84	413	533
480cm / 6	100	495	615
480cm / 7	116	578	698
480cm / 8	132	660	780
480cm / 9	148	743	863
480cm / 10	164	825	945

Ø / LAYER	VOLUME [m³]	WALL HEIGHT [cm]	HEIGHT [cm]
560cm / 4	96	330	470
560cm / 5	117	413	553
560cm / 6	138	495	635
560cm / 7	159	578	718
560cm / 8	180	660	800
560cm / 9	201	743	883
560cm / 10	222	825	965

Ø / LAYER	VOLUME [m³]	WALL HEIGHT [cm]	HEIGHT [cm]
640cm / 4	124	330	490
640cm / 5	151	413	573
640cm / 6	178	495	655
640cm / 7	205	578	738
640cm / 8	232	660	820
640cm / 9	259	743	903
640cm / 10	286	825	985

Ø / LAYER	VOLUME [m³]	WALL HEIGHT [cm]	HEIGHT [cm]
720cm / 4	156	330	510
720cm / 5	190	413	593
720cm / 6	224	495	675
720cm / 7	258	578	758
720cm / 8	292	660	840
720cm / 9	326	743	923
720cm / 10	360	825	1 005

Bigger volumes also available!



STEEL HOPPER BOTTOMS

GALVANIZED STEEL HOPPER BOTTOMS 45°

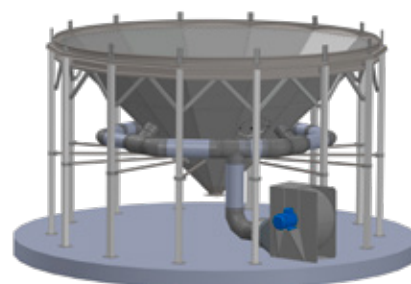
Ø4,8m / height 290cm / volume 14,0m³
 Ø5,6m / height 330cm / volume 22,0m³
 Ø6,4m / height 370cm / volume 29,0m³
 Ø7,2m / height 420cm / volume 47,0m³

WELDED STEEL HOPPER BOTTOMS 30°

Ø4,8m / height 221cm / volume 8,3m³
 Ø5,6m / height 229cm / volume 12,3m³
 Ø6,4m / height 247cm / volume 18,5m³
 Ø7,2m / height 294cm / volume 28,0m³

VENTILATION SYSTEM

Steel hopper bottom bins (45°) can be equipped with a ventilation system, which cools dried grain. Grain can be stored in bins equipped with a ventilation system directly after threshing, which means that the bin can also be utilised for buffer storage.



JEMA CHAIN CONVEYORS FOR ANY CONVEYING NEEDS

High quality, Danish JEMA conveyors are made of a strong galvanized material, which makes them particularly suitable for outdoor applications.



Conveyors are designed for transportation of grain and other bulk goods. A quality roller chain fitted with rubber or synthetic carriers ensures that all material transport is conducted quietly, safely and effectively. Conveyors have a low power consumption in relation to their capacity.

CONVEYOR	T44	T45	T49	T57
Capacity based on 750 kg/m ³ (wheat) [t / h]	30	60	105	150
Capacity [m ³ / h]	40	80	140	200
RPM [1 / min]	180	180	45 / 60	45 / 60
Chain speed [m / s]	1,1	1,1	0,79 / 0,99	0,79 / 0,99
Chain length [mm]	41,4	41,4	125,0	125,0
Tensile strength (dyn.) [kN]	min. 17,8	min. 17,8	118	118
Carrier material	rubber	rubber	PEHD 1000	PEHD 1000
Thickness: drive station [mm]	3,0	3,0	3,0	3,0
Thickness: tightening section [mm]	3 / 1,5	3,0 / 1,5	3,0	3,0
Thickness: other parts [mm]	1,5	1,5	3,0	3,0

■ T44/T45 INTAKE CONVEYORS

STANDARD EQUIPMENTS

- ✓ Directly mounted gear motor
- ✓ Torque arm for shock absorption
- ✓ 90° outlet hopper in drive station
- ✓ Tensioner, inspection and cleaning hatches in drive station and tightening section
- ✓ Adjustable plates in the inlet troughs

OPTIONS

- + Power transmission with V-belts
- + 45° upward curve
- + Tipping hopper



■ T49/T57 HORIZONTAL CONVEYORS

STANDARD EQUIPMENTS

- ✓ Directly mounted gear motor
- ✓ Outlet hopper in drive station
- ✓ Inspection hatch in drive station and tightening section
- ✓ Inlet

OPTIONS

- + Intermediate outlet
- + Shutter in drive station / tightening section
- + Wire suspension
- + Speed control



**WE SERVE YOU IN DRYING ISSUES.
LET'S PLAN TOGETHER
A DRYING SOLUTION
ACCORDING TO YOUR NEEDS!**

  @arskametalli

© Arskametalli Oy 2022 | All rights reserved. Technical specifications are approximate.
In the photos in this brochure or other publications may occur devices which are not standard equipment.

ARSKAMETALLI OY

Saarentaantie 33
FI-31400 Somero
tel. +358 2 748 9700
www.arskametalli.fi/en

