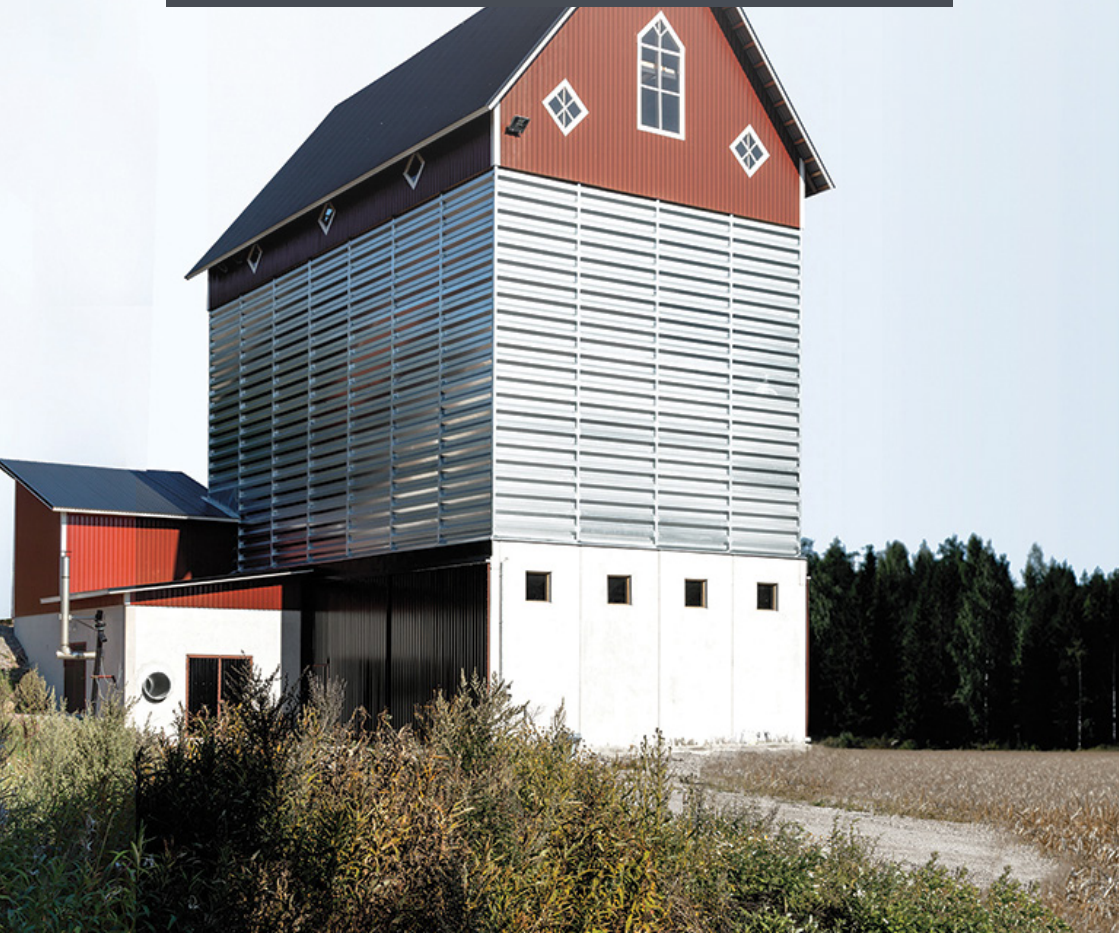




**SQUARE SILO**

**STORAGE SYSTEMS**



**EFFICIENT GRAIN DRYING AND HIGH-QUALITY STORAGE**

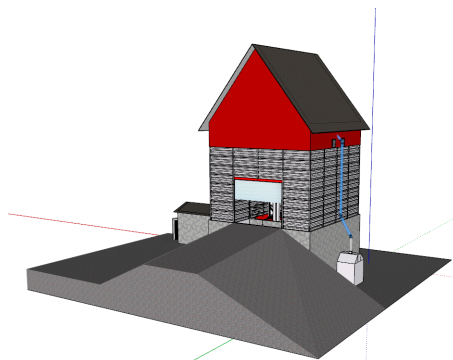
## **SQUARE SILO STORAGE SYSTEMS**

The carefully designed and wide Mepu square silo storage system product range can be tailored to the needs of individual customers. The six basic square silo storage system base layouts are extensively customizable by increasing the number and height of silos.

The intake hopper, dryer, and sorting facilities can be installed inside the complex dryer, in which case the grain handling stages take place conveniently under the same roof. Possible dryer heat sources include oil-burning furnaces, environment-friendly and cost-effective wood chip furnaces equipped with biofuel burner system or gas-burning furnaces.

### **OPTIONS**

- Hopper steel parts and grate
- Stair steps
- Ventilation system
- Bin cover hatches
- Grates





Square silo storage systems are easy to install; the customer can choose from our extensive range of accessories the components that the customer is incapable or unwilling to construct. External wall elements can also be supplied painted.

In addition to the standard intake hopper, we offer a very diverse range of intake hoppers equipped with conveyors (such as drive-over models, for example).

## **AUTOMATION ALLOWS REMOTE CONTROL**

With the help of additional equipment, the dryer's easy-touse control centre can be automated so that the dryer can be controlled remotely by your home PC or by a tablet computer from a tractor cab, for example. The modern dryer technology takes care of the loading and unloading automatically, thereby enabling continued use of the dryer.

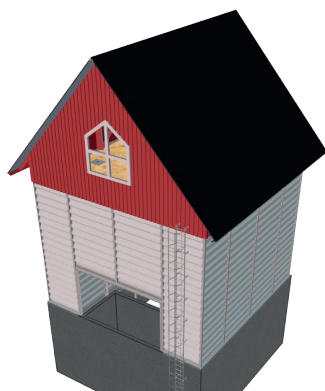




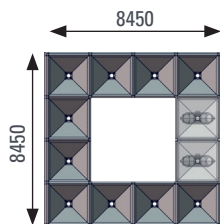
**SYSTEM 1**



**SYSTEM 2**

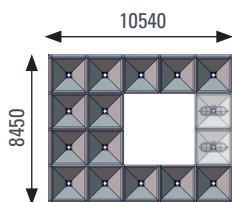


**SYSTEM 3**



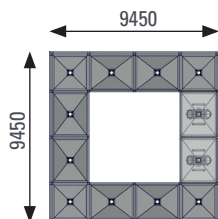
### System 1

Storage silo [layer]	6	7	8	9	10	11	12	13	14	...	19
Storage silo [pcs]	10	10	10	10	10	10	10	10	10	...	10
Storage silo [m³]	231	268	304	341	377	413	450	486	523	...	705
Fresh grain silo [layer]	1	2	3	4	5	6	7	8	9	...	14
Fresh grain silo [pcs]	2	2	2	2	2	2	2	2	2	...	2
Fresh grain silo [m³]	17	24	31	39	46	53	61	68	75	...	112
Total volume [m³]	248	292	336	379	423	467	510	554	598	...	816



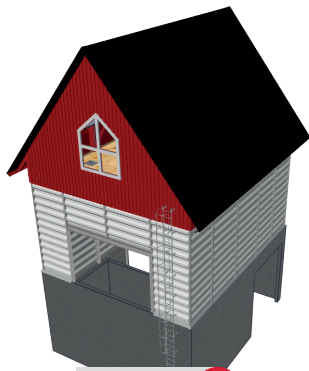
### System 2

Storage silo [layer]	6	7	8	9	10	11	12	13	14	...	19
Storage silo [pcs]	14	14	14	14	14	14	14	14	14	...	14
Storage silo [m³]	323	375	426	477	528	579	630	681	732	...	986
Fresh grain silo [layer]	1	2	3	4	5	6	7	8	9	...	14
Fresh grain silo [pcs]	2	2	2	2	2	2	2	2	2	...	2
Fresh grain silo [m³]	17	24	31	39	46	53	61	68	75	...	112
Total volume [m³]	340	399	457	515	574	632	690	748	807	...	1098

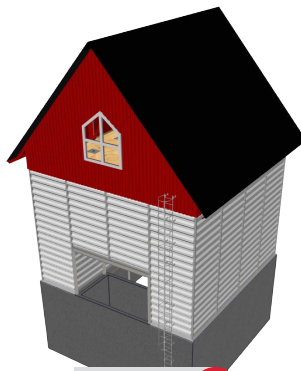


### System 3

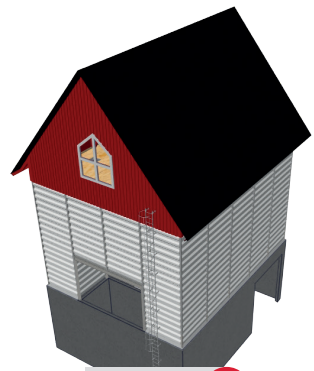
Storage silo [layer]	6	7	8	9	10	11	12	13
Storage silo [pcs]	10	10	10	10	10	10	10	10
Storage silo [m³]	266	308	349	391	433	474	516	557
Fresh grain silo [layer]	1	2	3	4	5	6	7	8
Fresh grain silo [pcs]	2	2	2	2	2	2	2	2
Fresh grain silo [m³]	22	31	34	49	58	67	76	85
Total volume [m³]	288	339	389	440	491	541	592	642



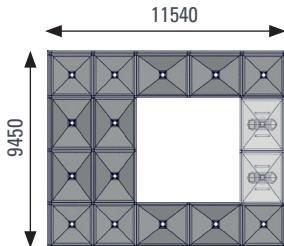
**SYSTEM 4**



**SYSTEM 5**

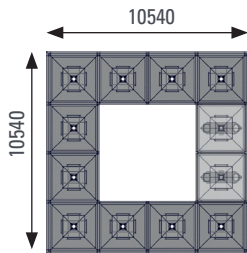


**SYSTEM 6**



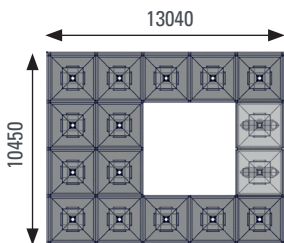
### System 4

Storage silo [layer]	6	7	8	9	10	11	12	13
Storage silo [pcs]	14	14	14	14	14	14	14	14
Storage silo [m³]	371	429	486	544	602	660	718	775
Fresh grain silo [layer]	1	2	3	4	5	6	7	8
Fresh grain silo [pcs]	2	2	2	2	2	2	2	2
Fresh grain silo [m³]	22	31	39	49	58	67	76	85
Total volume [m³]	393	459	526	593	660	727	794	860



### System 5

Storage silo [layer]	6	7	8	9	10	11	12	13
Storage silo [pcs]	10	10	10	10	10	10	10	10
Storage silo [m³]	361	417	473	529	585	641	697	753
Fresh grain silo [layer]	1	2	3	4	5	6	7	8
Fresh grain silo [pcs]	2	2	2	2	2	2	2	2
Fresh grain silo [m³]	27	38	49	60	72	83	94	105
Total volume [m³]	388	455	522	589	656	724	791	858



### System 6

Storage silo [layer]	6	7	8	9	10	11	12	13
Storage silo [pcs]	14	14	14	14	14	14	14	14
Storage silo [m³]	505	583	662	740	819	897	975	1053
Fresh grain silo [layer]	1	2	3	4	5	6	7	8
Fresh grain silo [pcs]	2	2	2	2	2	2	2	2
Fresh grain silo [m³]	27	38	49	60	72	83	94	105
Total volume [m³]	532	621	711	801	890	980	1069	1159

**CONTACT US!**

**[www.mepu.com](http://www.mepu.com)**



Mepu Oy reserves the right to make changes in the range, i.e. to the model, colour, equipment and price changes to the products it supplies, without any prior notification. The standard delivery contents of products may vary between different market areas. The photos in this brochure and in other publications may display equipment that are not included in the standard delivery. The performance values and technical specifications are intended as a guide. Check the delivery contents of the product with your Mepu reseller.



**MEPU Oy**

Mynämäentie 59, 21900 Yläne, Finland  
tel. +358 2 275 4444, [mepu@mepu.com](mailto:mepu@mepu.com)

